

Datasheet for ABIN730078
anti-KLRK1 antibody (AA 121-219)

4 Images

3 Publications

[Go to Product page](#)

Overview

Quantity:	100 µL
Target:	KLRK1
Binding Specificity:	AA 121-219
Reactivity:	Mouse
Host:	Rabbit
Clonality:	Polyclonal
Conjugate:	This KLRK1 antibody is un-conjugated
Application:	Western Blotting (WB), Flow Cytometry (FACS), ELISA, Immunohistochemistry (Frozen Sections) (IHC (fro)), Immunofluorescence (Cultured Cells) (IF (cc)), Immunofluorescence (Paraffin-embedded Sections) (IF (p)), Immunohistochemistry (Paraffin-embedded Sections) (IHC (p))

Product Details

Immunogen:	KLH conjugated synthetic peptide derived from rat KLRK1
Isotype:	IgG
Cross-Reactivity:	Mouse
Predicted Reactivity:	Human,Rat
Purification:	Purified by Protein A.

Target Details

Target:	KLRK1
---------	-------

Target Details

Alternative Name:	NKG2D (KLRK1 Products)
Background:	<p>Synonyms: NKG2D, Nkrp2, NKG2-D type II integral membrane protein, Killer cell lectin-like receptor subfamily K member 1, NK cell receptor D, NK lectin-like receptor, NKLLR, NKG2-D-activating NK receptor, NKR-P2, CD314, Klrk1</p> <p>Background: Function as an activating and costimulatory receptor involved in immunosurveillance upon binding to various cellular stress-inducible ligands displayed at the surface of autologous tumor cells and virus-infected cells. Provides both stimulatory and costimulatory innate immune responses on activated killer (NK) cells, leading to cytotoxic activity. Acts as a costimulatory receptor for T-cell receptor (TCR) in CD8(+) T-cell-mediated adaptive immune responses by amplifying T-cell activation. Stimulates perforin-mediated elimination of ligand-expressing tumor cells. Signaling involves calcium influx, culminating in the expression of TNF-alpha. Participates in NK cell-mediated bone marrow graft rejection. May play a regulatory role in differentiation and survival of NK cells. Binds to ligands belonging to various subfamilies of MHC class I-related glycoproteins.</p>
Gene ID:	24934
UniProt:	O70215
Pathways:	Activation of Innate immune Response , Cellular Response to Molecule of Bacterial Origin , Regulation of Leukocyte Mediated Immunity , Positive Regulation of Immune Effector Process

Application Details

Application Notes:	WB 1:300-5000 ELISA 1:500-1000 FCM 1:20-100 IHC-P 1:200-400 IHC-F 1:100-500 IF(IHC-P) 1:50-200 IF(IHC-F) 1:50-200 IF(ICC) 1:50-200
Restrictions:	For Research Use only

Handling

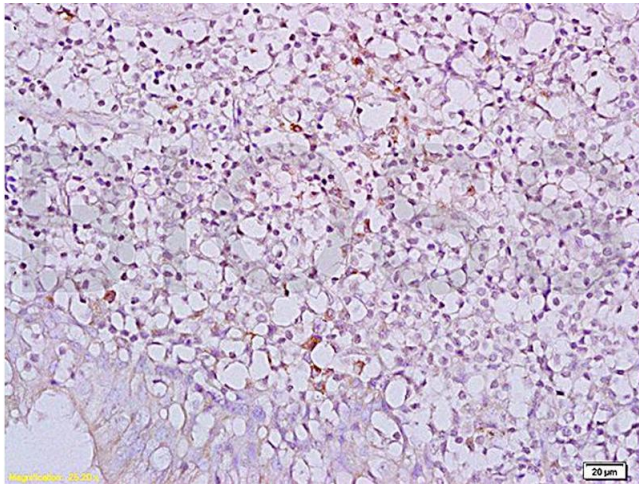
Format:	Liquid
Concentration:	1 µg/µL

Handling

Buffer:	0.01M TBS(pH 7.4) with 1 % BSA, 0.02 % Proclin300 and 50 % Glycerol.
Preservative:	ProClin
Precaution of Use:	This product contains ProClin: a POISONOUS AND HAZARDOUS SUBSTANCE, which should be handled by trained staff only.
Storage:	4 °C,-20 °C
Storage Comment:	Shipped at 4°C. Store at -20°C for one year. Avoid repeated freeze/thaw cycles.
Expiry Date:	12 months

Publications

Product cited in:	<p>Mozer-Lisewska, Mania, Kowala-Piaskowska, Kluk, Samara, Pauli, ?eromski: "Detection and significance of cytotoxic cell subsets in biopsies of HCV-infected human livers." in: Archivum immunologiae et therapiae experimentalis, Vol. 62, Issue 2, pp. 153-60, (2014) (PubMed).</p> <p>Onishi, Kiyota, Koya, Tanaka, Umebayashi, Katano, Morisaki: "Random migration contributes to cytotoxicity of activated CD8+ T-lymphocytes but not NK cells." in: Anticancer research, Vol. 34, Issue 8, pp. 3947-56, (2014) (PubMed).</p> <p>Ruck, Bittner, Gross, Breuer, Albrecht, Korr, Göbel, Pankratz, Henschel, Schwab, Staszewski, Prinz, Kuhlmann, Meuth, Wiendl: "CD4+NKG2D+ T cells exhibit enhanced migratory and encephalitogenic properties in neuroinflammation." in: PLoS ONE, Vol. 8, Issue 11, pp. e81455, (2013) (PubMed).</p>
-------------------	---



Immunohistochemistry

Image 1. Formalin-fixed and paraffin embedded human nasopharyngeal carcinoma labeled with Anti-NKG2D/CD314/KLRK1 Polyclonal Antibody, Unconjugated (ABIN730078) at 1:200, followed by conjugation to the secondary antibody and DAB staining

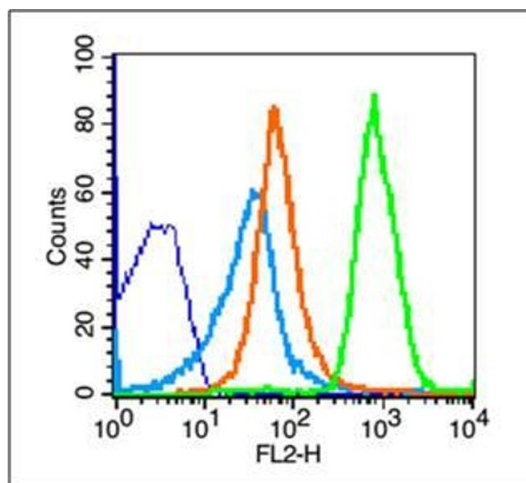
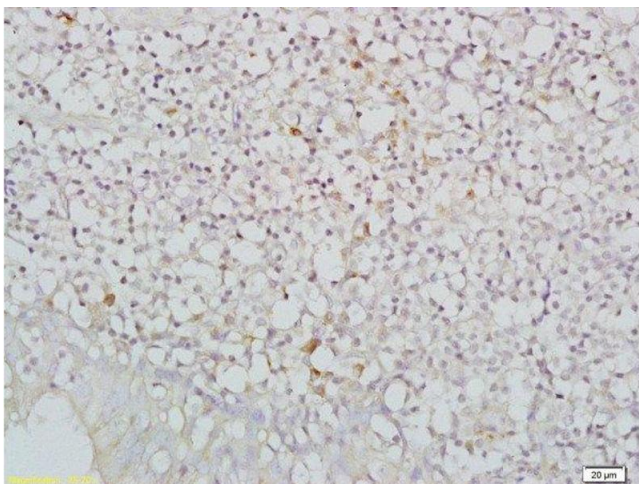


Image 2. Thymus cells probed with NKG2D Polyclonal Antibody, unconjugated at 1:100 dilution for 30 minutes compared to control cells (blue) and isotype control (orange)



Immunohistochemistry (Paraffin-embedded Sections)

Image 3. Formalin-fixed and paraffin embedded human nasopharyngeal carcinoma labeled with Anti-NKG2D/CD314/KLRK1 Polyclonal Antibody, Unconjugated at 1:200, followed by conjugation to the secondary antibody and DAB staining

Please check the [product details page](#) for more images. Overall 4 images are available for ABIN730078.