

Datasheet for ABIN7300828
anti-HLA-H antibody (Center)



[Go to Product page](#)

2 Images

Overview

Quantity:	100 µL
Target:	HLA-H
Binding Specificity:	Center
Reactivity:	Human
Host:	Rabbit
Clonality:	Polyclonal
Conjugate:	This HLA-H antibody is un-conjugated
Application:	Western Blotting (WB), Immunohistochemistry (IHC)

Product Details

Immunogen:	KLH-conjugated synthetic peptide encompassing a sequence within the center region of human HLA-H.
Specificity:	Recognizes endogenous levels of HLA-H protein.
Characteristics:	Rabbit polyclonal antibody to HLA-H
Purification:	The antibody was purified by immunogen affinity chromatography.

Target Details

Target:	HLA-H
Alternative Name:	HLA-H (HLA-H Products)
Background:	HLAH, Putative HLA class I histocompatibility antigen, alpha chain H, HLA-12.4, HLA-AR, MHC

Target Details

	class I antigen H
Gene ID:	3136
UniProt:	P01893
Pathways:	Human Leukocyte Antigen (HLA) in Adaptive Immune Response

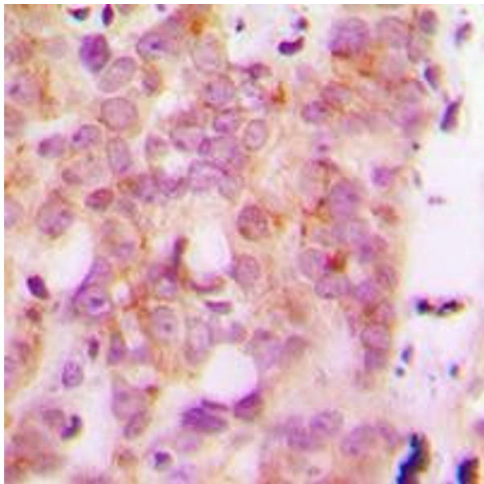
Application Details

Application Notes:	WB (1:500 - 1:1000), IH (1:100 - 1:200)
Restrictions:	For Research Use only

Handling

Format:	Liquid
Buffer:	Liquid in 0.42 % Potassium phosphate, 0.87 % Sodium chloride, pH 7.3, 30 % glycerol, and 0.01 % sodium azide.
Preservative:	Sodium azide
Precaution of Use:	This product contains Sodium azide: a POISONOUS AND HAZARDOUS SUBSTANCE which should be handled by trained staff only.
Storage:	-20 °C
Storage Comment:	Shipped at 4°C. Upon delivery aliquot and store at -20°C for one year. Avoid freeze/thaw cycles.
Expiry Date:	12 months

Images



Immunohistochemistry

Image 1. Immunohistochemical analysis of HLA-H staining in human breast cancer formalin fixed paraffin embedded tissue section. The section was pre-treated using heat mediated antigen retrieval with sodium citrate buffer (pH 6.0). The section was then incubated with the antibody at room temperature and detected using an HRP conjugad compact polymer system. DAB was used as the chromogen. The section was then counterstained with

haematoxylin and mounted with DPX.

Western Blotting

Image 2. Western blot analysis of HLA-H expression in A431 (A) whole cell lysates.

