

Datasheet for ABIN7300830
anti-HMG20B antibody (N-Term)[Go to Product page](#)

3 Images

Overview

Quantity:	100 µL
Target:	HMG20B
Binding Specificity:	N-Term
Reactivity:	Human
Host:	Rabbit
Clonality:	Polyclonal
Conjugate:	This HMG20B antibody is un-conjugated
Application:	Western Blotting (WB), Immunohistochemistry (IHC), Immunofluorescence (IF), Immunochromatography (IC)

Product Details

Immunogen:	KLH-conjugated synthetic peptide encompassing a sequence within the N-term region of human BRAF35.
Specificity:	Recognizes endogenous levels of BRAF35 protein.
Characteristics:	Rabbit polyclonal antibody to BRAF35
Purification:	The antibody was purified by immunogen affinity chromatography.

Target Details

Target:	HMG20B
Alternative Name:	BRAF35 (HMG20B Products)

Target Details

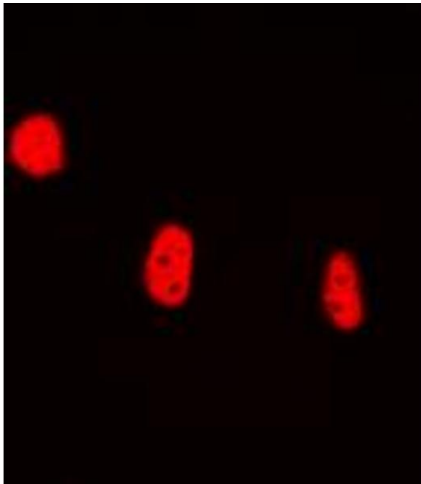
Background:	BRAF35, HMGX2, HMGXB2, SMARCE1R, SWI/SNF-related matrix-associated actin-dependent regulator of chromatin subfamily E member 1-related, SMARCE1-related protein, BRCA2-associated factor 35, HMG box-containing protein 20B, HMG domain-containing protein 2, HMG domain-containing protein HMGX2, Sox-like transcriptional factor, Structural DNA-binding protein BRAF35
Gene ID:	10362
UniProt:	Q9P0W2

Application Details

Application Notes:	WB (1:500 - 1:1000), IH (1:100 - 1:200), IF/IC (1:100 - 1:500)
Restrictions:	For Research Use only

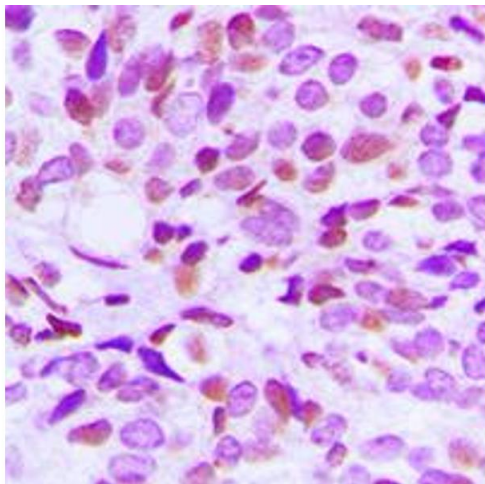
Handling

Format:	Liquid
Buffer:	Liquid in 0.42 % Potassium phosphate, 0.87 % Sodium chloride, pH 7.3, 30 % glycerol, and 0.01 % sodium azide.
Preservative:	Sodium azide
Precaution of Use:	This product contains Sodium azide: a POISONOUS AND HAZARDOUS SUBSTANCE which should be handled by trained staff only.
Storage:	-20 °C
Storage Comment:	Shipped at 4°C. Upon delivery aliquot and store at -20°C for one year. Avoid freeze/thaw cycles.
Expiry Date:	12 months



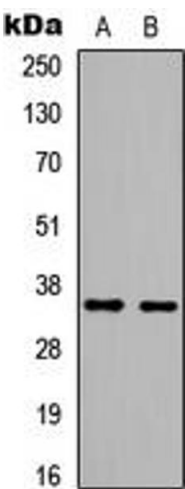
Immunofluorescence

Image 1. Immunofluorescent analysis of BRAF35 staining in HEK293T cells. Formalin-fixed cells were permeabilized with 0.1% Triton X-100 in TBS for 5-10 minutes and blocked with 3% BSA-PBS for 30 minutes at room temperature. Cells were probed with the primary antibody in 3% BSA-PBS and incubated overnight at 4 °C in a humidified chamber. Cells were washed with PBST and incubated with a DyLight 594-conjugated secondary antibody (red) in PBS at room temperature in the dark. DAPI was used to stain the cell nuclei (blue).



Immunohistochemistry

Image 2. Immunohistochemical analysis of BRAF35 staining in human breast cancer formalin fixed paraffin embedded tissue section. The section was pre-treated using heat mediated antigen retrieval with sodium citrate buffer (pH 6.0). The section was then incubated with the antibody at room temperature and detected using an HRP conjugated compact polymer system. DAB was used as the chromogen. The section was then counterstained with haematoxylin and mounted with DPX.



Western Blotting

Image 3. Western blot analysis of BRAF35 expression in HeLa (A), HEK293T (B) whole cell lysates.