

Datasheet for ABIN7300836
anti-Homeobox C6 antibody (C-Term)



[Go to Product page](#)

3 Images

Overview

Quantity:	100 µL
Target:	Homeobox C6 (HOXC6)
Binding Specificity:	C-Term
Reactivity:	Human, Mouse, Rat, Sheep, Monkey
Host:	Rabbit
Clonality:	Polyclonal
Conjugate:	This Homeobox C6 antibody is un-conjugated
Application:	Western Blotting (WB), Immunohistochemistry (IHC), Immunofluorescence (IF), Immunochromatography (IC)

Product Details

Immunogen:	KLH-conjugated synthetic peptide encompassing a sequence within the C-term region of human HOXC6.
Specificity:	Recognizes endogenous levels of HOXC6 protein.
Characteristics:	Rabbit polyclonal antibody to HOXC6
Purification:	The antibody was purified by immunogen affinity chromatography.

Target Details

Target:	Homeobox C6 (HOXC6)
Alternative Name:	HOXC6 (HOXC6 Products)

Target Details

Background:	HOX3C, Homeobox protein Hox-C6, Homeobox protein CP25, Homeobox protein HHO.C8, Homeobox protein Hox-3C
Gene ID:	3223, 15425
UniProt:	P09630 , P10629

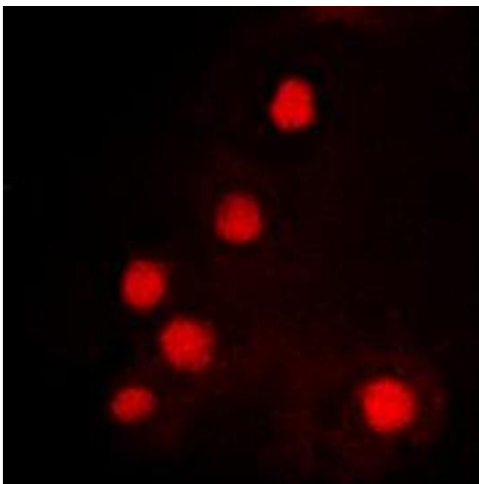
Application Details

Application Notes:	WB (1:500 - 1:1000), IH (1:100 - 1:200), IF/IC (1:100 - 1:500)
Restrictions:	For Research Use only

Handling

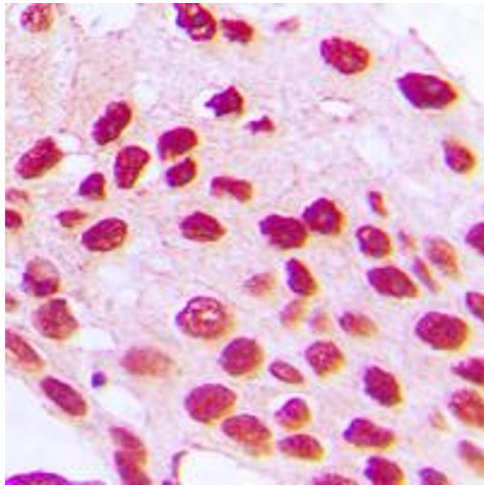
Format:	Liquid
Buffer:	Liquid in 0.42 % Potassium phosphate, 0.87 % Sodium chloride, pH 7.3, 30 % glycerol, and 0.01 % sodium azide.
Preservative:	Sodium azide
Precaution of Use:	This product contains Sodium azide: a POISONOUS AND HAZARDOUS SUBSTANCE which should be handled by trained staff only.
Storage:	-20 °C
Storage Comment:	Shipped at 4°C. Upon delivery aliquot and store at -20°C for one year. Avoid freeze/thaw cycles.
Expiry Date:	12 months

Images



Immunofluorescence

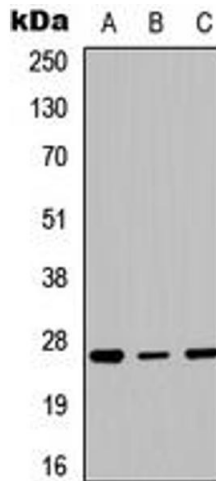
Image 1. Immunofluorescent analysis of HOXC6 staining in K562 cells. Formalin-fixed cells were permeabilized with 0.1% Triton X-100 in TBS for 5-10 minutes and blocked with 3% BSA-PBS for 30 minutes at room temperature. Cells were probed with the primary antibody in 3% BSA-PBS and incubated overnight at 4 °C in a humidified chamber. Cells were washed with PBST and incubated with a DyLight 594-conjugated secondary antibody (red) in PBS at room



temperature in the dark. DAPI was used to stain the cell nuclei (blue).

Immunohistochemistry

Image 2. Immunohistochemical analysis of HOXC6 staining in human prostate cancer formalin fixed paraffin embedded tissue section. The section was pre-treated using heat mediated antigen retrieval with sodium citrate buffer (pH 6.0). The section was then incubated with the antibody at room temperature and detected using an HRP conjugated compact polymer system. DAB was used as the chromogen. The section was then counterstained with haematoxylin and mounted with DPX.



Western Blotting

Image 3. Western blot analysis of HOXC6 expression in K562 (A), mouse brain (B), rat muscle (C) whole cell lysates.