

Datasheet for ABIN7300886  
**anti-IRS1 antibody (pSer636)**



[Go to Product page](#)

3 Images

## Overview

Quantity:	100 µL
Target:	IRS1
Binding Specificity:	pSer636
Reactivity:	Human, Mouse, Rat, Pig
Host:	Rabbit
Clonality:	Polyclonal
Conjugate:	This IRS1 antibody is un-conjugated
Application:	Western Blotting (WB), Immunohistochemistry (IHC), Immunofluorescence (IF), Immunochromatography (IC)

## Product Details

Immunogen:	KLH-conjugated synthetic peptide encompassing a sequence within the center region of human IRS1 (pS636).
Specificity:	Recognizes endogenous levels of IRS1 (pS636) protein.
Characteristics:	Rabbit polyclonal antibody to IRS1 (pS636)
Purification:	The antibody was purified by immunogen affinity chromatography.

## Target Details

Target:	IRS1
Alternative Name:	IRS1 ( <a href="#">IRS1 Products</a> )

## Target Details

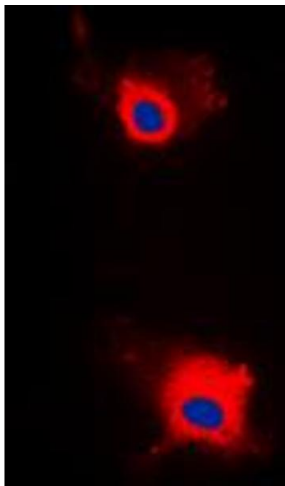
Background:	Insulin receptor substrate 1, IRS-1
Gene ID:	3667, 16367, 25467
UniProt:	P35568, P35569, P35570
Pathways:	<a href="#">Fc-epsilon Receptor Signaling Pathway</a> , <a href="#">EGFR Signaling Pathway</a> , <a href="#">Neurotrophin Signaling Pathway</a> , <a href="#">Positive Regulation of Peptide Hormone Secretion</a> , <a href="#">Hormone Transport</a> , <a href="#">Negative Regulation of Hormone Secretion</a> , <a href="#">Response to Growth Hormone Stimulus</a> , <a href="#">Carbohydrate Homeostasis</a> , <a href="#">Regulation of Carbohydrate Metabolic Process</a>

## Application Details

Application Notes:	WB (1:500 - 1:1000), IH (1:100 - 1:200), IF/IC (1:100 - 1:500)
Restrictions:	For Research Use only

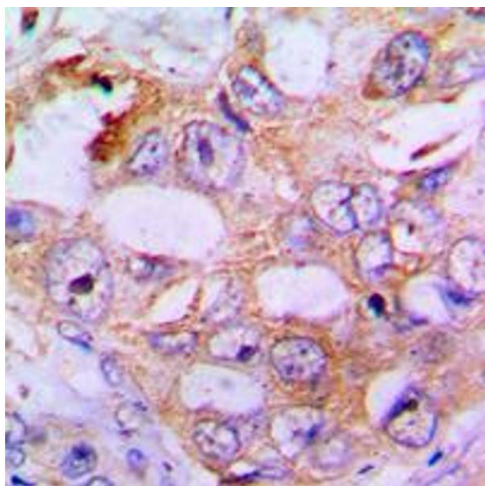
## Handling

Format:	Liquid
Buffer:	Liquid in 0.42 % Potassium phosphate, 0.87 % Sodium chloride, pH 7.3, 30 % glycerol, and 0.01 % sodium azide.
Preservative:	Sodium azide
Precaution of Use:	This product contains Sodium azide: a POISONOUS AND HAZARDOUS SUBSTANCE which should be handled by trained staff only.
Storage:	-20 °C
Storage Comment:	Shipped at 4°C. Upon delivery aliquot and store at -20°C for one year. Avoid freeze/thaw cycles.
Expiry Date:	12 months



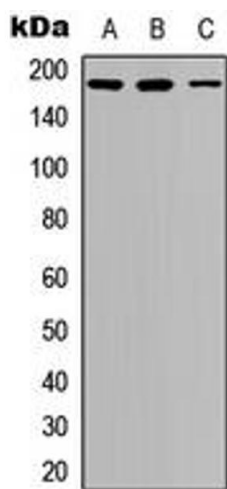
### Immunofluorescence

**Image 1.** Immunofluorescent analysis of IRS1 (pS636) staining in MCF7 cells. Formalin-fixed cells were permeabilized with 0.1% Triton X-100 in TBS for 5-10 minutes and blocked with 3% BSA-PBS for 30 minutes at room temperature. Cells were probed with the primary antibody in 3% BSA-PBS and incubated overnight at 4 °C in a humidified chamber. Cells were washed with PBST and incubated with a DyLight 594-conjugated secondary antibody (red) in PBS at room temperature in the dark. DAPI was used to stain the cell nuclei (blue).



### Immunohistochemistry

**Image 2.** Immunohistochemical analysis of IRS1 (pS636) staining in human lung cancer formalin fixed paraffin embedded tissue section. The section was pre-treated using heat mediated antigen retrieval with sodium citrate buffer (pH 6.0). The section was then incubated with the antibody at room temperature and detected using an HRP conjugated compact polymer system. DAB was used as the chromogen. The section was then counterstained with haematoxylin and mounted with DPX.



### Western Blotting

**Image 3.** Western blot analysis of IRS1 (pS636) expression in HeLa UV-treated (A), SHSY5Y (B), NIH3T3 (C) whole cell lysates.