

Datasheet for ABIN7300914  
**anti-KLF10/11 antibody (C-Term)**

## 2 Images

[Go to Product page](#)

## Overview

Quantity:	100 µL
Target:	KLF10/11
Binding Specificity:	C-Term
Reactivity:	Human, Mouse, Rat, Zebrafish (Danio rerio)
Host:	Rabbit
Clonality:	Polyclonal
Conjugate:	This KLF10/11 antibody is un-conjugated
Application:	Immunohistochemistry (IHC), Western Blotting (WB)

## Product Details

Immunogen:	KLH-conjugated synthetic peptide encompassing a sequence within the C-term region of human KLF10/11.
Specificity:	Recognizes endogenous levels of KLF10/11 protein.
Characteristics:	Rabbit polyclonal antibody to KLF10/11
Purification:	The antibody was purified by immunogen affinity chromatography.

## Target Details

Target:	KLF10/11
Alternative Name:	KLF10/11 ( <a href="#">KLF10/11 Products</a> )
Background:	KLF10, TIEG, TIEG1, Krueppel-like factor 10, EGR-alpha, Transforming growth factor-beta-

## Target Details

inducible early growth response protein 1, TGFB-inducible early growth response protein 1, TIEG-1, KLF11, FKLf, TIEG2, Krueppel-like factor 11, Transforming growth factor-beta-inducible early growth response protein 2, TGFB-inducible early growth response protein 2, TIEG-2

Gene ID: 7071, 8462, 21847

UniProt: [Q13118](#), [O14901](#), [O089091](#), [Q8K1S5](#), [O08876](#)

## Application Details

Application Notes: WB (1:500 - 1:1000), IH (1:100 - 1:200)

Restrictions: For Research Use only

## Handling

Format: Liquid

Buffer: Liquid in 0.42 % Potassium phosphate, 0.87 % Sodium chloride, pH 7.3, 30 % glycerol, and 0.01 % sodium azide.

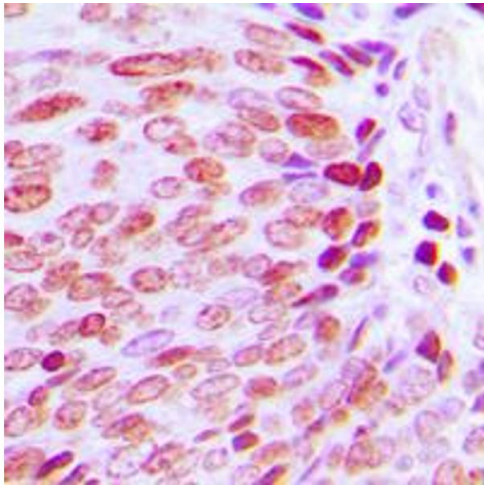
Preservative: Sodium azide

Precaution of Use: This product contains Sodium azide: a POISONOUS AND HAZARDOUS SUBSTANCE which should be handled by trained staff only.

Storage: -20 °C

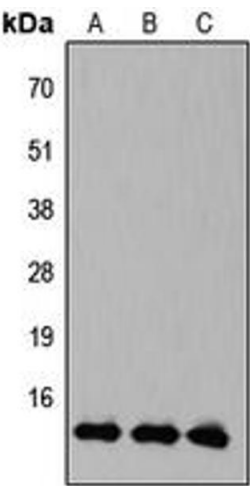
Storage Comment: Shipped at 4°C. Upon delivery aliquot and store at -20°C for one year. Avoid freeze/thaw cycles.

Expiry Date: 12 months



### Immunohistochemistry

**Image 1.** Immunohistochemical analysis of KLF10/11 staining in human prostate cancer formalin fixed paraffin embedded tissue section. The section was pre-treated using heat mediated antigen retrieval with sodium citrate buffer (pH 6.0). The section was then incubated with the antibody at room temperature and detected using an HRP conjugated compact polymer system. DAB was used as the chromogen. The section was then counterstained with haematoxylin and mounted with DPX.



### Western Blotting

**Image 2.** Western blot analysis of KLF10/11 expression in HEK293T (A), Raw264.7 (B), PC12 (C) whole cell lysates.