



[Go to Product page](#)

Datasheet for ABIN7300916

anti-KLHL29 antibody (Center)

2 Images

Overview

Quantity:	100 µL
Target:	KLHL29
Binding Specificity:	Center
Reactivity:	Human, Mouse, Rat
Host:	Rabbit
Clonality:	Polyclonal
Conjugate:	This KLHL29 antibody is un-conjugated
Application:	Immunohistochemistry (IHC), Western Blotting (WB)

Product Details

Immunogen:	KLH-conjugated synthetic peptide encompassing a sequence within the center region of human KLHL29.
Specificity:	Recognizes endogenous levels of KLHL29 protein.
Characteristics:	Rabbit polyclonal antibody to KLHL29
Purification:	The antibody was purified by immunogen affinity chromatography.

Target Details

Target:	KLHL29
Alternative Name:	KLHL29 (KLHL29 Products)
Background:	KBTBD9, KIAA1921, Kelch-like protein 29, Kelch repeat and BTB domain-containing protein 9

Target Details

Gene ID: 114818

UniProt: [Q96CT2, Q80T74](#)

Application Details

Application Notes: WB (1:500 - 1:1000), IH (1:100 - 1:200)

Restrictions: For Research Use only

Handling

Format: Liquid

Buffer: Liquid in 0.42 % Potassium phosphate, 0.87 % Sodium chloride, pH 7.3, 30 % glycerol, and 0.01 % sodium azide.

Preservative: Sodium azide

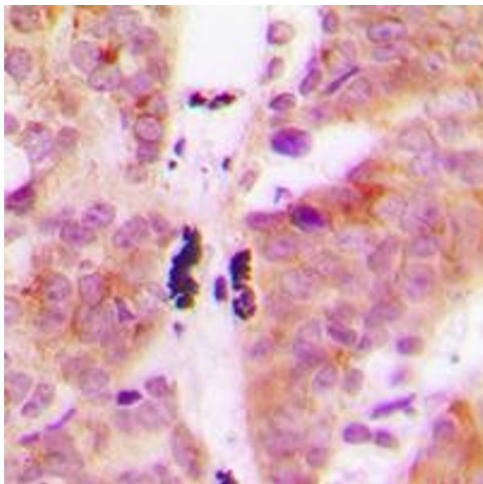
Precaution of Use: This product contains Sodium azide: a POISONOUS AND HAZARDOUS SUBSTANCE which should be handled by trained staff only.

Storage: -20 °C

Storage Comment: Shipped at 4°C. Upon delivery aliquot and store at -20°C for one year. Avoid freeze/thaw cycles.

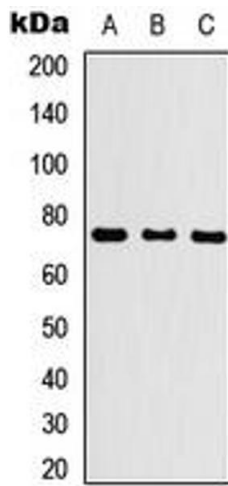
Expiry Date: 12 months

Images



Immunohistochemistry

Image 1. Immunohistochemical analysis of KLHL29 staining in human breast cancer formalin fixed paraffin embedded tissue section. The section was pre-treated using heat mediated antigen retrieval with sodium citrate buffer (pH 6.0). The section was then incubated with the antibody at room temperature and detected using an HRP conjugated compact polymer system. DAB was used as the chromogen. The section was then counterstained with haematoxylin and mounted with DPX.



Western Blotting

Image 2. Western blot analysis of KLHL29 expression in HEK293T (A), NS-1 (B), PC12 (C) whole cell lysates.