

Datasheet for ABIN7300934
anti-LIPE antibody (pSer552)



[Go to Product page](#)

2 Images

Overview

Quantity:	100 µL
Target:	LIPE
Binding Specificity:	pSer552
Reactivity:	Human, Monkey
Host:	Rabbit
Clonality:	Polyclonal
Conjugate:	This LIPE antibody is un-conjugated
Application:	Western Blotting (WB), Immunohistochemistry (IHC)

Product Details

Immunogen:	KLH-conjugated synthetic peptide encompassing a sequence within the center region of human HSL (pS552).
Specificity:	Recognizes endogenous levels of HSL (pS552) protein.
Characteristics:	Rabbit polyclonal antibody to HSL (pS552)
Purification:	The antibody was purified by immunogen affinity chromatography.

Target Details

Target:	LIPE
Alternative Name:	HSL (LIPE Products)
Background:	Hormone-sensitive lipase, HSL

Target Details

Gene ID:	3991, 16890, 25330
UniProt:	Q05469 , P54310 , P15304
Pathways:	AMPK Signaling , Monocarboxylic Acid Catabolic Process , Lipid Metabolism

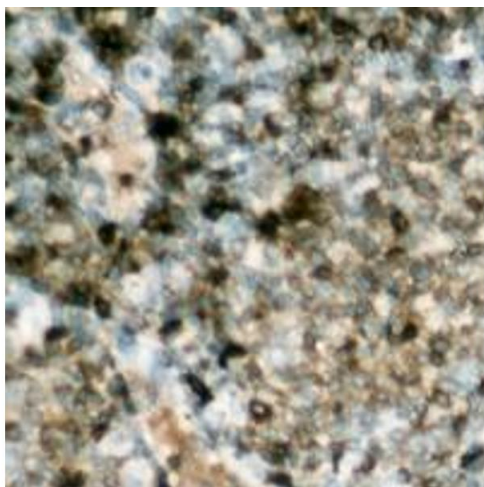
Application Details

Application Notes:	WB (1:500 - 1:1000), IH (1:100 - 1:200)
Restrictions:	For Research Use only

Handling

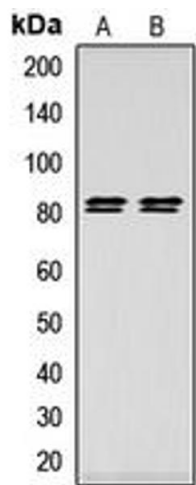
Format:	Liquid
Buffer:	Liquid in 0.42 % Potassium phosphate, 0.87 % Sodium chloride, pH 7.3, 30 % glycerol, and 0.01 % sodium azide.
Preservative:	Sodium azide
Precaution of Use:	This product contains Sodium azide: a POISONOUS AND HAZARDOUS SUBSTANCE which should be handled by trained staff only.
Storage:	-20 °C
Storage Comment:	Shipped at 4°C. Upon delivery aliquot and store at -20°C for one year. Avoid freeze/thaw cycles.
Expiry Date:	12 months

Images



Immunohistochemistry

Image 1. Immunohistochemical analysis of HSL (pS552) staining in human lymph node formalin fixed paraffin embedded tissue section. The section was pre-treated using heat mediated antigen retrieval with sodium citrate buffer (pH 6.0). The section was then incubated with the antibody at room temperature and detected using an HRP conjugated compact polymer system. DAB was used as the chromogen. The section was then counterstained with haematoxylin and mounted with DPX.



Western Blotting

Image 2. Western blot analysis of HSL (pS552) expression in HeLa (A), HEK293T (B) whole cell lysates.