



Datasheet for ABIN7300960
anti-MAP3K1 antibody (C-Term, pSer1402)



[Go to Product page](#)

2 Images

Overview

Quantity:	100 µL
Target:	MAP3K1
Binding Specificity:	C-Term, pSer1402
Reactivity:	Human, Mouse, Rat, Monkey, Rabbit, Pig
Host:	Rabbit
Clonality:	Polyclonal
Conjugate:	This MAP3K1 antibody is un-conjugated
Application:	Western Blotting (WB), Immunohistochemistry (IHC)

Product Details

Immunogen:	KLH-conjugated synthetic peptide encompassing a sequence within the C-term region of human MEKK1 (pT1402).
Specificity:	Recognizes endogenous levels of MEKK1 (pT1402) protein.
Characteristics:	Rabbit polyclonal antibody to MEKK1 (pT1402)
Purification:	The antibody was purified by immunogen affinity chromatography.

Target Details

Target:	MAP3K1
Alternative Name:	MEKK1 (MAP3K1 Products)
Background:	MAPKKK1, MEKK, MEKK1, Mitogen-activated protein kinase kinase kinase 1, MAPK/ERK kinase

Target Details

kinase 1, MEK kinase 1, MEKK 1

Gene ID: 4214, 116667

UniProt: [Q13233](#), [P53349](#), [Q62925](#)

Pathways: [MAPK Signaling](#), [Interferon-gamma Pathway](#), [Caspase Cascade in Apoptosis](#), [TLR Signaling](#), [Fc-epsilon Receptor Signaling Pathway](#), [Activation of Innate immune Response](#), [Regulation of Actin Filament Polymerization](#), [Toll-Like Receptors Cascades](#)

Application Details

Application Notes: WB (1:500 - 1:1000), IH (1:100 - 1:200)

Restrictions: For Research Use only

Handling

Format: Liquid

Buffer: Liquid in 0.42 % Potassium phosphate, 0.87 % Sodium chloride, pH 7.3, 30 % glycerol, and 0.01 % sodium azide.

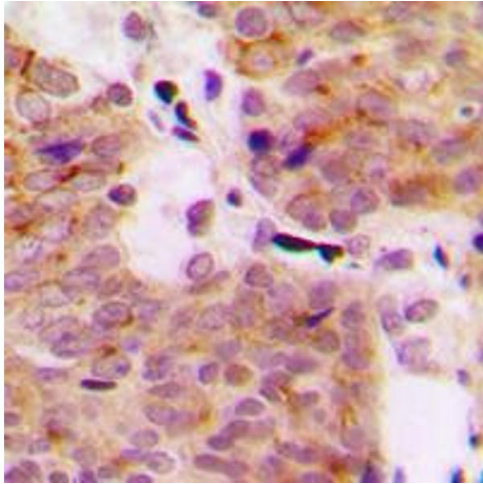
Preservative: Sodium azide

Precaution of Use: This product contains Sodium azide: a POISONOUS AND HAZARDOUS SUBSTANCE which should be handled by trained staff only.

Storage: -20 °C

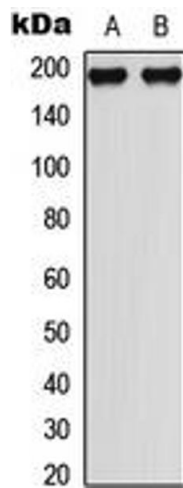
Storage Comment: Shipped at 4°C. Upon delivery aliquot and store at -20°C for one year. Avoid freeze/thaw cycles.

Expiry Date: 12 months



Immunohistochemistry

Image 1. Immunohistochemical analysis of MEKK1 (pT1402) staining in human breast cancer formalin fixed paraffin embedded tissue section. The section was pre-treated using heat mediated antigen retrieval with sodium citrate buffer (pH 6.0). The section was then incubated with the antibody at room temperature and detected using an HRP conjugated compact polymer system. DAB was used as the chromogen. The section was then counterstained with haematoxylin and mounted with DPX.



Western Blotting

Image 2. Western blot analysis of MEKK1 (pT1402) expression in HeLa (A), NIH3T3 (B) whole cell lysates.