

Datasheet for ABIN7300976
anti-MARK3 antibody (N-Term)[Go to Product page](#)

3 Images

Overview

Quantity:	100 µL
Target:	MARK3
Binding Specificity:	N-Term
Reactivity:	Human, Mouse, Rat, Zebrafish (Danio rerio), Chicken
Host:	Rabbit
Clonality:	Polyclonal
Conjugate:	This MARK3 antibody is un-conjugated
Application:	Western Blotting (WB), Immunohistochemistry (IHC), Immunofluorescence (IF), Immunochromatography (IC)

Product Details

Immunogen:	KLH-conjugated synthetic peptide encompassing a sequence within the N-term region of human MARK3.
Specificity:	Recognizes endogenous levels of MARK3 protein.
Characteristics:	Rabbit polyclonal antibody to MARK3
Purification:	The antibody was purified by immunogen affinity chromatography.

Target Details

Target:	MARK3
Alternative Name:	MARK3 (MARK3 Products)

Target Details

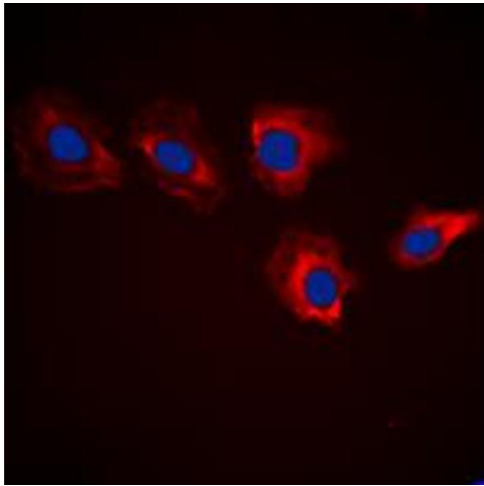
Background:	CTAK1, EMK2, MAP/microtubule affinity-regulating kinase 3, C-TAK1, cTAK1, Cdc25C-associated protein kinase 1, ELKL motif kinase 2, EMK-2, Protein kinase STK10, Ser/Thr protein kinase PAR-1, Par-1a, Serine/threonine-protein kinase p78
Gene ID:	4140, 17169, 170577
UniProt:	P27448 , Q03141 , Q8VHF0
Pathways:	SARS-CoV-2 Protein Interactome

Application Details

Application Notes:	WB (1:500 - 1:1000), IH (1:100 - 1:200), IF/IC (1:100 - 1:500)
Restrictions:	For Research Use only

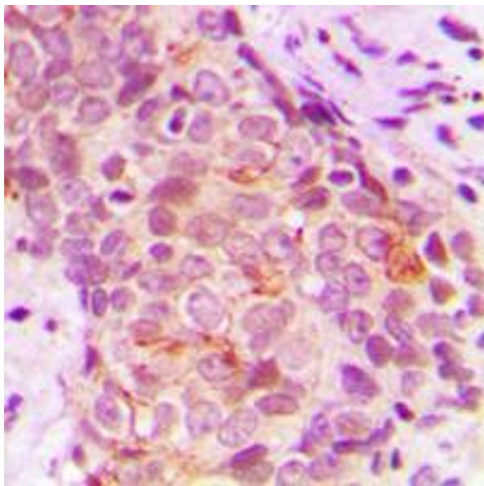
Handling

Format:	Liquid
Buffer:	Liquid in 0.42 % Potassium phosphate, 0.87 % Sodium chloride, pH 7.3, 30 % glycerol, and 0.01 % sodium azide.
Preservative:	Sodium azide
Precaution of Use:	This product contains Sodium azide: a POISONOUS AND HAZARDOUS SUBSTANCE which should be handled by trained staff only.
Storage:	-20 °C
Storage Comment:	Shipped at 4°C. Upon delivery aliquot and store at -20°C for one year. Avoid freeze/thaw cycles.
Expiry Date:	12 months



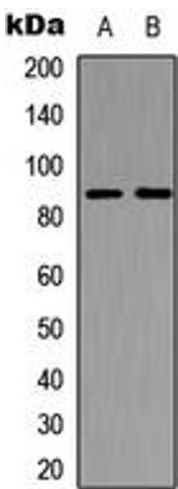
Immunofluorescence

Image 1. Immunofluorescent analysis of MARK3 staining in HeLa cells. Formalin-fixed cells were permeabilized with 0.1% Triton X-100 in TBS for 5-10 minutes and blocked with 3% BSA-PBS for 30 minutes at room temperature. Cells were probed with the primary antibody in 3% BSA-PBS and incubated overnight at 4 °C in a humidified chamber. Cells were washed with PBST and incubated with a DyLight 594-conjugated secondary antibody (red) in PBS at room temperature in the dark. DAPI was used to stain the cell nuclei (blue).



Immunohistochemistry

Image 2. Immunohistochemical analysis of MARK3 staining in human breast cancer formalin fixed paraffin embedded tissue section. The section was pre-treated using heat mediated antigen retrieval with sodium citrate buffer (pH 6.0). The section was then incubated with the antibody at room temperature and detected using an HRP conjugated compact polymer system. DAB was used as the chromogen. The section was then counterstained with haematoxylin and mounted with DPX.



Western Blotting

Image 3. Western blot analysis of MARK3 expression in HeLa (A), mouse brain (B) whole cell lysates.