

Datasheet for ABIN7300980
anti-MBTPS2 antibody (Center)[Go to Product page](#)

1 Image

Overview

Quantity:	100 µL
Target:	MBTPS2
Binding Specificity:	Center
Reactivity:	Human, Mouse, Rat, Cow
Host:	Rabbit
Clonality:	Polyclonal
Conjugate:	This MBTPS2 antibody is un-conjugated
Application:	Western Blotting (WB)

Product Details

Immunogen:	KLH-conjugated synthetic peptide encompassing a sequence within the center region of human MBTPS2.
Specificity:	Recognizes endogenous levels of MBTPS2 protein.
Characteristics:	Rabbit polyclonal antibody to MBTPS2
Purification:	The antibody was purified by immunogen affinity chromatography.

Target Details

Target:	MBTPS2
Alternative Name:	MBTPS2 (MBTPS2 Products)
Background:	S2P, Membrane-bound transcription factor site-2 protease, Endopeptidase S2P, Sterol

Target Details

	regulatory element-binding proteins intramembrane protease, SREBPs intramembrane protease
Gene ID:	51360, 270669
UniProt:	O43462 , Q8CHX6
Pathways:	ER-Nucleus Signaling

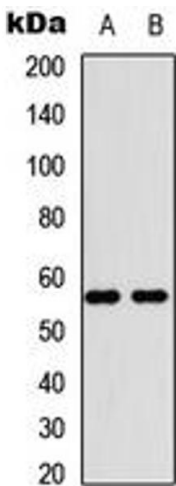
Application Details

Application Notes:	WB (1:500 - 1:1000)
Restrictions:	For Research Use only

Handling

Format:	Liquid
Buffer:	Liquid in 0.42 % Potassium phosphate, 0.87 % Sodium chloride, pH 7.3, 30 % glycerol, and 0.01 % sodium azide.
Preservative:	Sodium azide
Precaution of Use:	This product contains Sodium azide: a POISONOUS AND HAZARDOUS SUBSTANCE which should be handled by trained staff only.
Storage:	-20 °C
Storage Comment:	Shipped at 4°C. Upon delivery aliquot and store at -20°C for one year. Avoid freeze/thaw cycles.
Expiry Date:	12 months

Images



Western Blotting

Image 1. Western blot analysis of MBTPS2 expression in HEK293T (A), Raw264.7 (B) whole cell lysates.