

Datasheet for ABIN7300994
anti-MOBKL1A antibody (Center)

2 Images

[Go to Product page](#)

Overview

Quantity:	100 µL
Target:	MOBKL1A (MOB1B)
Binding Specificity:	Center
Reactivity:	Human, Mouse, Rat, Cow, Zebrafish (Danio rerio), Monkey
Host:	Rabbit
Clonality:	Polyclonal
Application:	Western Blotting (WB), Immunohistochemistry (IHC)

Product Details

Immunogen:	KLH-conjugated synthetic peptide encompassing a sequence within the center region of human MOB1B.
Specificity:	Recognizes endogenous levels of MOB1B protein.
Characteristics:	Rabbit polyclonal antibody to MOB1B
Purification:	The antibody was purified by immunogen affinity chromatography.

Target Details

Target:	MOBKL1A (MOB1B)
Alternative Name:	MOB1B (MOB1B Products)
Background:	MOB4A, MOBKL1A, MOB kinase activator 1B, Mob1 homolog 1A, Mob1A, Mob1B, Mps one binder kinase activator-like 1A

Target Details

Gene ID:	92597, 68473
UniProt:	Q7L9L4 , Q8BPB0

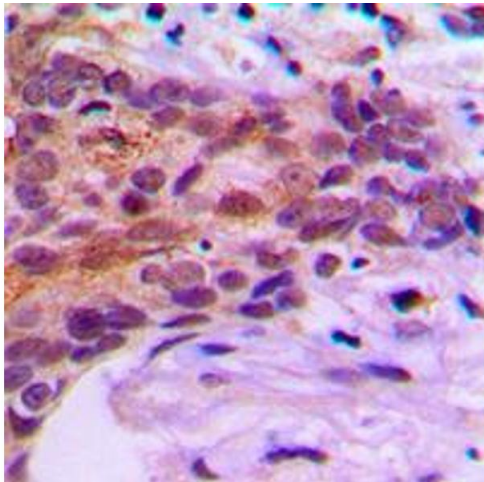
Application Details

Application Notes:	WB (1:500 - 1:1000), IH (1:100 - 1:200)
Restrictions:	For Research Use only

Handling

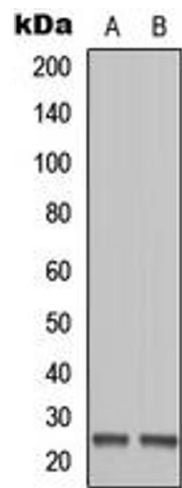
Format:	Liquid
Buffer:	Liquid in 0.42 % Potassium phosphate, 0.87 % Sodium chloride, pH 7.3, 30 % glycerol, and 0.01 % sodium azide.
Preservative:	Sodium azide
Precaution of Use:	This product contains Sodium azide: a POISONOUS AND HAZARDOUS SUBSTANCE which should be handled by trained staff only.
Storage:	-20 °C
Storage Comment:	Shipped at 4°C. Upon delivery aliquot and store at -20°C for one year. Avoid freeze/thaw cycles.
Expiry Date:	12 months

Images



Immunohistochemistry

Image 1. Immunohistochemical analysis of MOB1B staining in human prostate cancer formalin fixed paraffin embedded tissue section. The section was pre-treated using heat mediated antigen retrieval with sodium citrate buffer (pH 6.0). The section was then incubated with the antibody at room temperature and detected using an HRP conjugad compact polymer system. DAB was used as the chromogen. The section was then counterstained with haematoxylin and mounted with DPX.



Western Blotting

Image 2. Western blot analysis of MOB1B expression in Ramos (A), HEK293T (B) whole cell lysates.