

Datasheet for ABIN7301004
anti-MRPL42 antibody (Center)[Go to Product page](#)

2 Images

Overview

Quantity:	100 µL
Target:	MRPL42
Binding Specificity:	Center
Reactivity:	Human, Rat, Monkey, Mouse
Host:	Rabbit
Clonality:	Polyclonal
Conjugate:	This MRPL42 antibody is un-conjugated
Application:	Immunohistochemistry (IHC), Western Blotting (WB)

Product Details

Immunogen:	KLH-conjugated synthetic peptide encompassing a sequence within the center region of human MRPS32.
Specificity:	Recognizes endogenous levels of MRPS32 protein.
Characteristics:	Rabbit polyclonal antibody to MRPS32
Purification:	The antibody was purified by immunogen affinity chromatography.

Target Details

Target:	MRPL42
Alternative Name:	MRPS32 (MRPL42 Products)
Background:	MRPL31, MRPS32, RPML31, 39S ribosomal protein L42, mitochondrial, L42mt, MRP-L42, 28S

Target Details

	ribosomal protein S32, mitochondrial, MRP-S32, S32mt, 39S ribosomal protein L31, mitochondrial, L31mt, MRP-L31
Gene ID:	28977, 67270
UniProt:	Q9Y6G3 , Q9CPV3 , P0C2B9

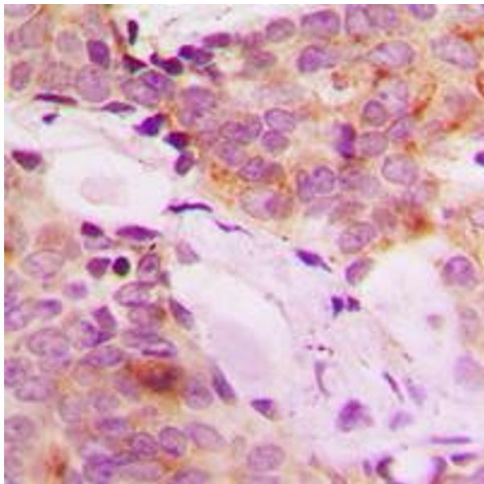
Application Details

Application Notes:	WB (1:500 - 1:1000), IH (1:100 - 1:200)
Restrictions:	For Research Use only

Handling

Format:	Liquid
Buffer:	Liquid in 0.42 % Potassium phosphate, 0.87 % Sodium chloride, pH 7.3, 30 % glycerol, and 0.01 % sodium azide.
Preservative:	Sodium azide
Precaution of Use:	This product contains Sodium azide: a POISONOUS AND HAZARDOUS SUBSTANCE which should be handled by trained staff only.
Storage:	-20 °C
Storage Comment:	Shipped at 4°C. Upon delivery aliquot and store at -20°C for one year. Avoid freeze/thaw cycles.
Expiry Date:	12 months

Images



Immunohistochemistry

Image 1. Immunohistochemical analysis of MRPS32 staining in human breast cancer formalin fixed paraffin embedded tissue section. The section was pre-treated using heat mediated antigen retrieval with sodium citrate buffer (pH 6.0). The section was then incubated with the antibody at room temperature and detected using an HRP conjugated compact polymer system. DAB was used as the chromogen. The section was then counterstained with

haematoxylin and mounted with DPX.

Western Blotting

Image 2. Western blot analysis of MRPS32 expression in HeLa (A), Raw264.7 (B), H9C2 (C) whole cell lysates.

