

Datasheet for ABIN7301056
anti-NFATC4 antibody (C-Term, pSer676)[Go to Product page](#)

3 Images

Overview

Quantity:	100 µL
Target:	NFATC4
Binding Specificity:	C-Term, pSer676
Reactivity:	Human
Host:	Rabbit
Clonality:	Polyclonal
Conjugate:	This NFATC4 antibody is un-conjugated
Application:	Western Blotting (WB), Immunohistochemistry (IHC), Immunofluorescence (IF), Immunochromatography (IC)

Product Details

Immunogen:	KLH-conjugated synthetic peptide encompassing a sequence within the C-term region of human NFAT3 (pS676).
Specificity:	Recognizes endogenous levels of NFAT3 (pS676) protein.
Characteristics:	Rabbit polyclonal antibody to NFAT3 (pS676)
Purification:	The antibody was purified by immunogen affinity chromatography.

Target Details

Target:	NFATC4
Alternative Name:	NFAT3 (NFATC4 Products)

Target Details

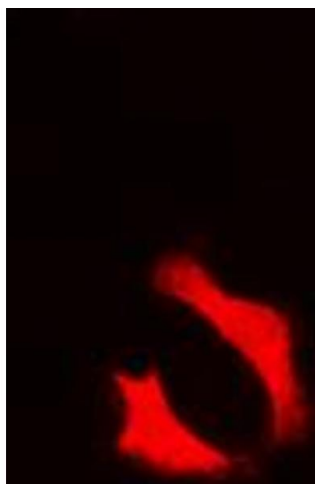
Background:	NFAT3, Nuclear factor of activated T-cells, cytoplasmic 4, NF-ATc4, NFATc4, T-cell transcription factor NFAT3, NF-AT3
Gene ID:	4776
UniProt:	Q14934
Pathways:	RTK Signaling , WNT Signaling

Application Details

Application Notes:	WB (1:500 - 1:1000), IH (1:100 - 1:200), IF/IC (1:100 - 1:500)
Restrictions:	For Research Use only

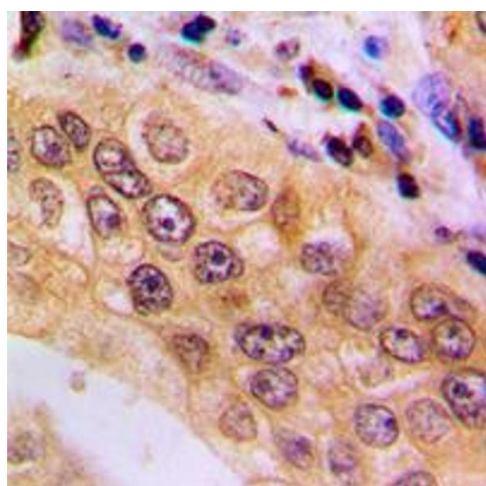
Handling

Format:	Liquid
Buffer:	Liquid in 0.42 % Potassium phosphate, 0.87 % Sodium chloride, pH 7.3, 30 % glycerol, and 0.01 % sodium azide.
Preservative:	Sodium azide
Precaution of Use:	This product contains Sodium azide: a POISONOUS AND HAZARDOUS SUBSTANCE which should be handled by trained staff only.
Storage:	-20 °C
Storage Comment:	Shipped at 4°C. Upon delivery aliquot and store at -20°C for one year. Avoid freeze/thaw cycles.
Expiry Date:	12 months



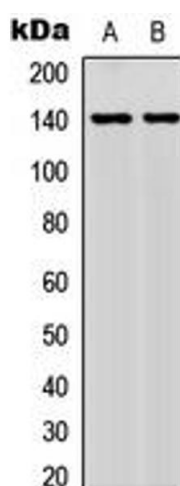
Immunofluorescence

Image 1. Immunofluorescent analysis of NFAT3 (pS676) staining in MCF7 cells. Formalin-fixed cells were permeabilized with 0.1% Triton X-100 in TBS for 5-10 minutes and blocked with 3% BSA-PBS for 30 minutes at room temperature. Cells were probed with the primary antibody in 3% BSA-PBS and incubated overnight at 4 °C in a humidified chamber. Cells were washed with PBST and incubated with a DyLight 594-conjugated secondary antibody (red) in PBS at room temperature in the dark. DAPI was used to stain the cell nuclei (blue).



Immunohistochemistry

Image 2. Immunohistochemical analysis of NFAT3 (pS676) staining in human lung cancer formalin fixed paraffin embedded tissue section. The section was pre-treated using heat mediated antigen retrieval with sodium citrate buffer (pH 6.0). The section was then incubated with the antibody at room temperature and detected using an HRP conjugated compact polymer system. DAB was used as the chromogen. The section was then counterstained with haematoxylin and mounted with DPX.



Western Blotting

Image 3. Western blot analysis of NFAT3 (pS676) expression in MCF7 (A), HeLa (B) whole cell lysates.