

Datasheet for ABIN7301072
anti-NPDC1 antibody (Center)[Go to Product page](#)

2 Images

Overview

Quantity:	100 µL
Target:	NPDC1
Binding Specificity:	Center
Reactivity:	Human, Mouse, Rat
Host:	Rabbit
Clonality:	Polyclonal
Conjugate:	This NPDC1 antibody is un-conjugated
Application:	Western Blotting (WB), Immunohistochemistry (IHC)

Product Details

Immunogen:	KLH-conjugated synthetic peptide encompassing a sequence within the center region of human NPDC1.
Specificity:	Recognizes endogenous levels of NPDC1 protein.
Characteristics:	Rabbit polyclonal antibody to NPDC1
Purification:	The antibody was purified by immunogen affinity chromatography.

Target Details

Target:	NPDC1
Alternative Name:	NPDC1 (NPDC1 Products)
Background:	Neural proliferation differentiation and control protein 1, NPDC-1

Target Details

Gene ID:	56654, 18146
UniProt:	Q9NQX5 , Q64322

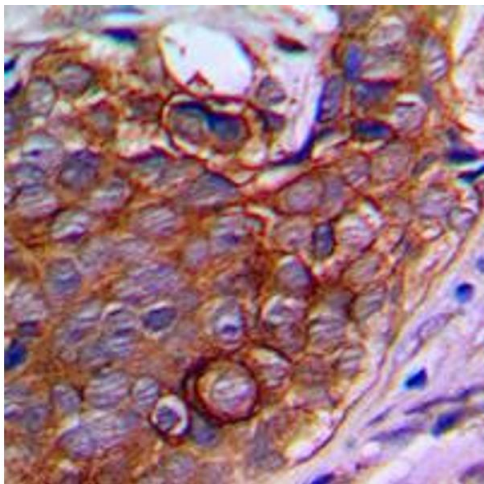
Application Details

Application Notes:	WB (1:500 - 1:1000), IH (1:100 - 1:200)
Restrictions:	For Research Use only

Handling

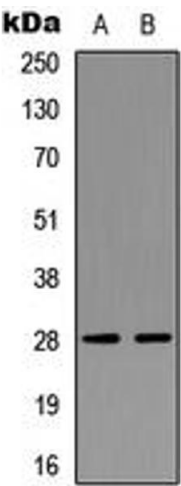
Format:	Liquid
Buffer:	Liquid in 0.42 % Potassium phosphate, 0.87 % Sodium chloride, pH 7.3, 30 % glycerol, and 0.01 % sodium azide.
Preservative:	Sodium azide
Precaution of Use:	This product contains Sodium azide: a POISONOUS AND HAZARDOUS SUBSTANCE which should be handled by trained staff only.
Storage:	-20 °C
Storage Comment:	Shipped at 4°C. Upon delivery aliquot and store at -20°C for one year. Avoid freeze/thaw cycles.
Expiry Date:	12 months

Images



Immunohistochemistry

Image 1. Immunohistochemical analysis of NPDC1 staining in human prostate cancer formalin fixed paraffin embedded tissue section. The section was pre-treated using heat mediated antigen retrieval with sodium citrate buffer (pH 6.0). The section was then incubated with the antibody at room temperature and detected using an HRP conjugad compact polymer system. DAB was used as the chromogen. The section was then counterstained with haematoxylin and mounted with DPX.



Western Blotting

Image 2. Western blot analysis of NPDC1 expression in SKNSH (A), Jurkat (B) whole cell lysates.