



[Go to Product page](#)

Datasheet for ABIN730108
anti-ZMAT3 antibody (AA 201-288)

4 Images

Overview

Quantity:	100 µL
Target:	ZMAT3
Binding Specificity:	AA 201-288
Reactivity:	Human, Mouse
Host:	Rabbit
Clonality:	Polyclonal
Conjugate:	This ZMAT3 antibody is un-conjugated
Application:	Western Blotting (WB), ELISA, Immunofluorescence (Paraffin-embedded Sections) (IF (p)), Immunofluorescence (Cultured Cells) (IF (cc)), Immunohistochemistry (Paraffin-embedded Sections) (IHC (p)), Immunohistochemistry (Frozen Sections) (IHC (fro))

Product Details

Immunogen:	KLH conjugated synthetic peptide derived from human PAG608
Isotype:	IgG
Cross-Reactivity:	Human, Mouse
Predicted Reactivity:	Rat,Dog,Cow,Horse,Chicken
Purification:	Purified by Protein A.

Target Details

Target:	ZMAT3
---------	-------

Target Details

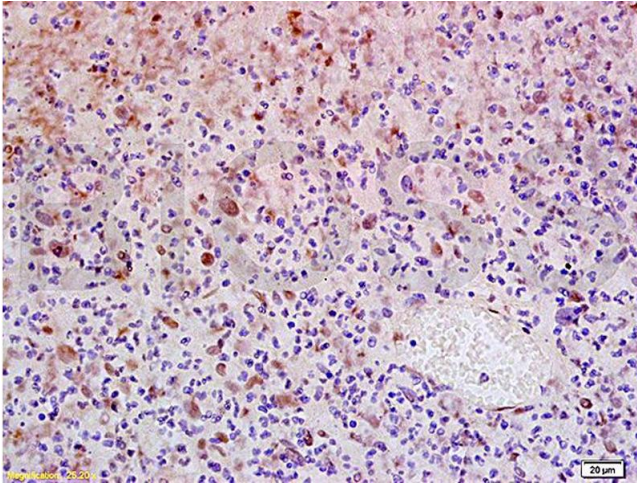
Alternative Name:	PAG608 (ZMAT3 Products)
Background:	Synonyms: WIG1, WIG-1, PAG608, Zinc finger matrin-type protein 3, Zinc finger protein WIG-1, p53-activated gene 608 protein, ZMAT3 Background: Acts as a bona fide target gene of p53/TP53. May play a role in the TP53-dependent growth regulatory pathway. May contribute to TP53-mediated apoptosis by regulation of TP53 expression and translocation to the nucleus and nucleolus.
Gene ID:	64393
UniProt:	Q9HA38

Application Details

Application Notes:	WB 1:300-5000 ELISA 1:500-1000 IHC-P 1:200-400 IHC-F 1:100-500 IF(IHC-P) 1:50-200 IF(IHC-F) 1:50-200 IF(ICC) 1:50-200
Restrictions:	For Research Use only

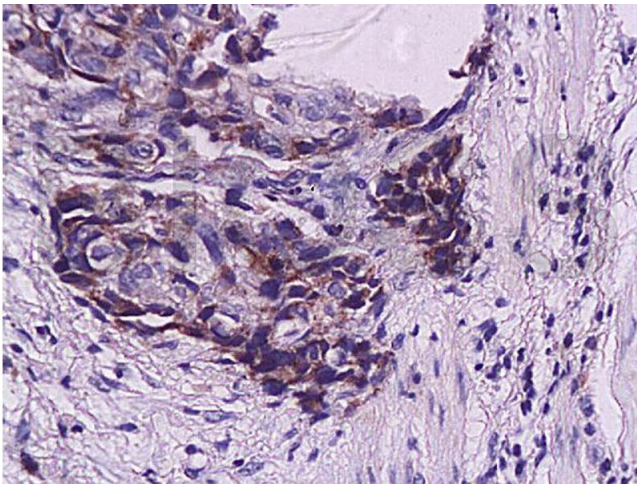
Handling

Format:	Liquid
Concentration:	1 µg/µL
Buffer:	0.01M TBS(pH 7.4) with 1 % BSA, 0.02 % Proclin300 and 50 % Glycerol.
Preservative:	ProClin
Precaution of Use:	This product contains ProClin: a POISONOUS AND HAZARDOUS SUBSTANCE, which should be handled by trained staff only.
Storage:	4 °C,-20 °C
Storage Comment:	Shipped at 4°C. Store at -20°C for one year. Avoid repeated freeze/thaw cycles.
Expiry Date:	12 months



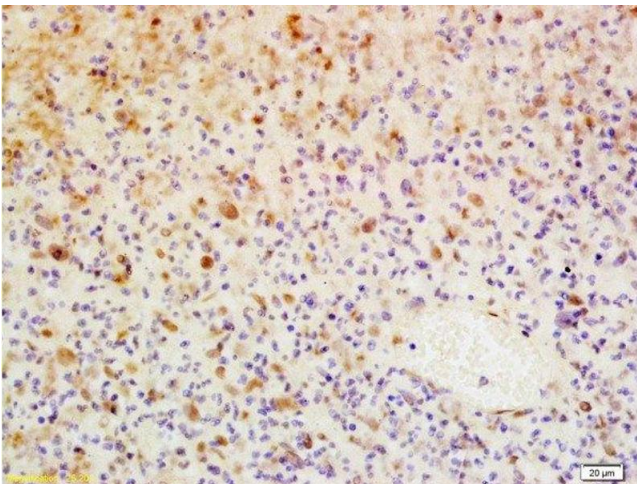
Immunohistochemistry

Image 1. Formalin-fixed and paraffin embedded human glioma tissue labeled with Anti-WIG-1/PAG608 Polyclonal Antibody, Unconjugated (ABIN730108) at 1:200, followed by conjugation to the secondary antibody and DAB staining



Immunohistochemistry

Image 2. Formalin-fixed and paraffin embedded human esophageal carcinoma labeled with Anti-WIG-1/PAG608 Polyclonal Antibody, Unconjugated (ABIN730108) at 1:200, followed by conjugation to the secondary antibody and DAB staining



Immunohistochemistry (Paraffin-embedded Sections)

Image 3. Formalin-fixed and paraffin embedded human glioma tissue labeled with Anti-WIG-1/PAG608 Polyclonal Antibody, Unconjugated at 1:200, followed by conjugation to the secondary antibody and DAB staining

Please check the [product details page](#) for more images. Overall 4 images are available for ABIN730108.