



[Go to Product page](#)

Datasheet for ABIN7301100
anti-PAGE3 antibody (Center)

2 Images

Overview

Quantity:	100 µL
Target:	PAGE3
Binding Specificity:	Center
Reactivity:	Human, Monkey, Mouse, Rat
Host:	Rabbit
Clonality:	Polyclonal
Conjugate:	This PAGE3 antibody is un-conjugated
Application:	Immunohistochemistry (IHC), Western Blotting (WB)

Product Details

Immunogen:	KLH-conjugated synthetic peptide encompassing a sequence within the center region of human PAGE3.
Specificity:	Recognizes endogenous levels of PAGE3 protein.
Characteristics:	Rabbit polyclonal antibody to PAGE3
Purification:	The antibody was purified by immunogen affinity chromatography.

Target Details

Target:	PAGE3
Alternative Name:	PAGE3 (PAGE3 Products)
Background:	GAGED1, P antigen family member 3, PAGE-3, G antigen family D member 1, Prostate-

Target Details

associated gene 3 protein

Gene ID: 139793

UniProt: [Q5JUK9](#)

Application Details

Application Notes: WB (1:500 - 1:1000), IH (1:100 - 1:200)

Restrictions: For Research Use only

Handling

Format: Liquid

Buffer: Liquid in 0.42 % Potassium phosphate, 0.87 % Sodium chloride, pH 7.3, 30 % glycerol, and 0.01 % sodium azide.

Preservative: Sodium azide

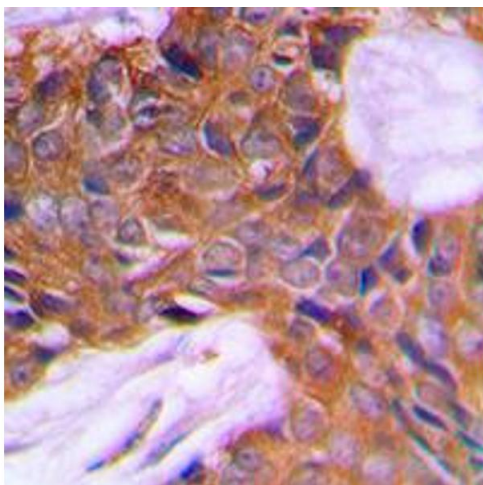
Precaution of Use: This product contains Sodium azide: a POISONOUS AND HAZARDOUS SUBSTANCE which should be handled by trained staff only.

Storage: -20 °C

Storage Comment: Shipped at 4°C. Upon delivery aliquot and store at -20°C for one year. Avoid freeze/thaw cycles.

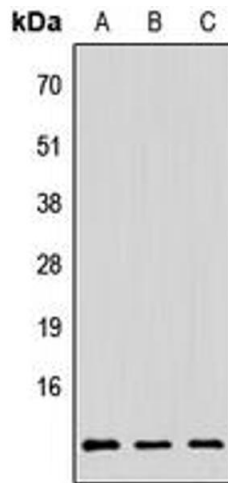
Expiry Date: 12 months

Images



Immunohistochemistry

Image 1. Immunohistochemical analysis of PAGE3 staining in human prostate cancer formalin fixed paraffin embedded tissue section. The section was pre-treated using heat mediated antigen retrieval with sodium citrate buffer (pH 6.0). The section was then incubated with the antibody at room temperature and detected using an HRP conjugated compact polymer system. DAB was used as the chromogen. The section was then counterstained with haematoxylin and mounted with DPX.



Western Blotting

Image 2. Western blot analysis of PAGE3 expression in HeLa (A), Raw264.7 (B), H9C2 (C) whole cell lysates.