

Datasheet for ABIN7301118
anti-PFKFB2 antibody (N-Term)

3 Images

[Go to Product page](#)

Overview

Quantity:	100 µL
Target:	PFKFB2
Binding Specificity:	N-Term
Reactivity:	Human, Monkey
Host:	Rabbit
Clonality:	Polyclonal
Conjugate:	This PFKFB2 antibody is un-conjugated
Application:	Western Blotting (WB), Immunohistochemistry (IHC), Immunofluorescence (IF), Immunochromatography (IC)

Product Details

Immunogen:	KLH-conjugated synthetic peptide encompassing a sequence within the N-term region of human PFKFB2.
Specificity:	Recognizes endogenous levels of PFKFB2 protein.
Characteristics:	Rabbit polyclonal antibody to PFKFB2
Purification:	The antibody was purified by immunogen affinity chromatography.

Target Details

Target:	PFKFB2
Alternative Name:	PFKFB2 (PFKFB2 Products)

Target Details

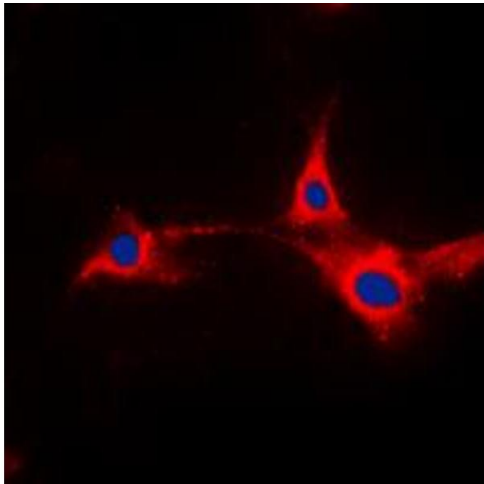
Background:	6-phosphofructo-2-kinase/fructose-2,6-bisphosphatase 2, 6PF-2-K/Fru-2,6-P2ase 2, PFK/FBPase 2, 6PF-2-K/Fru-2,6-P2ase heart-type isozyme
Gene ID:	5208, 18640, 24640
UniProt:	O60825 , P70265 , Q9JJH5
Pathways:	PI3K-Akt Signaling , Positive Regulation of Peptide Hormone Secretion , Regulation of Carbohydrate Metabolic Process

Application Details

Application Notes:	WB (1:500 - 1:1000), IH (1:100 - 1:200), IF/IC (1:100 - 1:500)
Restrictions:	For Research Use only

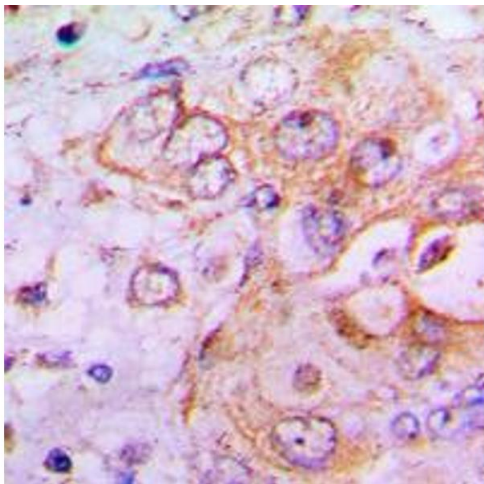
Handling

Format:	Liquid
Buffer:	Liquid in 0.42 % Potassium phosphate, 0.87 % Sodium chloride, pH 7.3, 30 % glycerol, and 0.01 % sodium azide.
Preservative:	Sodium azide
Precaution of Use:	This product contains Sodium azide: a POISONOUS AND HAZARDOUS SUBSTANCE which should be handled by trained staff only.
Storage:	-20 °C
Storage Comment:	Shipped at 4°C. Upon delivery aliquot and store at -20°C for one year. Avoid freeze/thaw cycles.
Expiry Date:	12 months



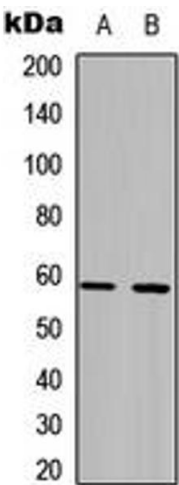
Immunofluorescence

Image 1. Immunofluorescent analysis of PFKFB2 staining in HepG2 cells. Formalin-fixed cells were permeabilized with 0.1% Triton X-100 in TBS for 5-10 minutes and blocked with 3% BSA-PBS for 30 minutes at room temperature. Cells were probed with the primary antibody in 3% BSA-PBS and incubated overnight at 4 °C in a humidified chamber. Cells were washed with PBST and incubated with a DyLight 594-conjugated secondary antibody (red) in PBS at room temperature in the dark. DAPI was used to stain the cell nuclei (blue).



Immunohistochemistry

Image 2. Immunohistochemical analysis of PFKFB2 staining in human lung cancer formalin fixed paraffin embedded tissue section. The section was pre-treated using heat mediated antigen retrieval with sodium citrate buffer (pH 6.0). The section was then incubated with the antibody at room temperature and detected using an HRP conjugated compact polymer system. DAB was used as the chromogen. The section was then counterstained with haematoxylin and mounted with DPX.



Western Blotting

Image 3. Western blot analysis of PFKFB2 expression in HCT116 (A), NIH3T3 (B) whole cell lysates.