

Datasheet for ABIN7301128

**anti-Phospholipase C gamma 2 antibody (C-Term)**[Go to Product page](#)**2** Images

## Overview

Quantity:	100 µL
Target:	Phospholipase C gamma 2 (PLCG2)
Binding Specificity:	C-Term
Reactivity:	Human, Rat, Mouse, Monkey
Host:	Rabbit
Clonality:	Polyclonal
Conjugate:	This Phospholipase C gamma 2 antibody is un-conjugated
Application:	Western Blotting (WB), Immunohistochemistry (IHC)

## Product Details

Immunogen:	KLH-conjugated synthetic peptide encompassing a sequence within the C-term region of human PLC gamma 2.
Specificity:	Recognizes endogenous levels of PLC gamma 2 protein.
Characteristics:	Rabbit polyclonal antibody to PLC gamma 2
Purification:	The antibody was purified by immunogen affinity chromatography.

## Target Details

Target:	Phospholipase C gamma 2 (PLCG2)
Alternative Name:	PLC gamma 2 ( <a href="#">PLCG2 Products</a> )
Background:	1-phosphatidylinositol 4,5-bisphosphate phosphodiesterase gamma-2, Phosphoinositide

## Target Details

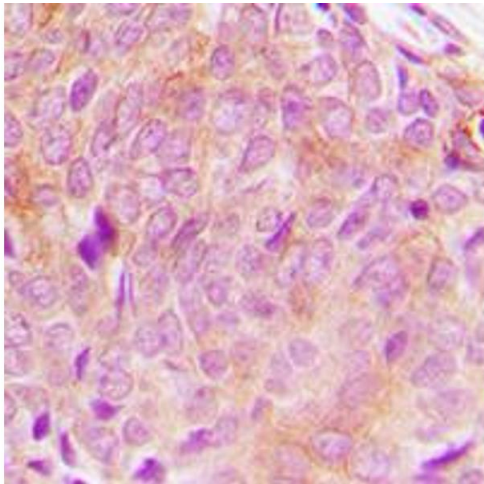
	phospholipase C-gamma-2, Phospholipase C-IV, PLC-IV, Phospholipase C-gamma-2, PLC-gamma-2
Gene ID:	5336, 234779, 29337
UniProt:	<a href="#">P16885</a> , <a href="#">Q8CIH5</a> , <a href="#">P24135</a>
Pathways:	<a href="#">RTK Signaling</a> , <a href="#">WNT Signaling</a> , <a href="#">Fc-epsilon Receptor Signaling Pathway</a> , <a href="#">Inositol Metabolic Process</a> , <a href="#">Myometrial Relaxation and Contraction</a> , <a href="#">Toll-Like Receptors Cascades</a> , <a href="#">VEGF Signaling</a> , <a href="#">BCR Signaling</a>

## Application Details

Application Notes:	WB (1:500 - 1:1000), IH (1:100 - 1:200)
Restrictions:	For Research Use only

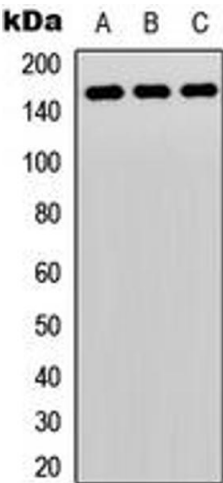
## Handling

Format:	Liquid
Buffer:	Liquid in 0.42 % Potassium phosphate, 0.87 % Sodium chloride, pH 7.3, 30 % glycerol, and 0.01 % sodium azide.
Preservative:	Sodium azide
Precaution of Use:	This product contains Sodium azide: a POISONOUS AND HAZARDOUS SUBSTANCE which should be handled by trained staff only.
Storage:	-20 °C
Storage Comment:	Shipped at 4°C. Upon delivery aliquot and store at -20°C for one year. Avoid freeze/thaw cycles.
Expiry Date:	12 months



Immunohistochemistry

**Image 1.** Immunohistochemical analysis of PLC gamma 2 staining in human breast cancer formalin fixed paraffin embedded tissue section. The section was pre-treated using heat mediated antigen retrieval with sodium citrate buffer (pH 6.0). The section was then incubated with the antibody at room temperature and detected using an HRP conjugated compact polymer system. DAB was used as the chromogen. The section was then counterstained with haematoxylin and mounted with DPX.



Western Blotting

**Image 2.** Western blot analysis of PLC gamma 2 expression in HeLa (A), Raw264.7 (B), rat lung (C) whole cell lysates.