

Datasheet for ABIN7301132

**anti-Phospholamban antibody (N-Term, pSer16, pSer17)**[Go to Product page](#)**2** Images

## Overview

Quantity:	100 µL
Target:	Phospholamban (PLN)
Binding Specificity:	N-Term, pSer16, pSer17
Reactivity:	Human, Rat, Mouse, Cow, Pig, Dog, Rabbit
Host:	Rabbit
Clonality:	Polyclonal
Conjugate:	This Phospholamban antibody is un-conjugated
Application:	Western Blotting (WB), Immunofluorescence (IF), Immunochromatography (IC)

## Product Details

Immunogen:	KLH-conjugated synthetic peptide encompassing a sequence within the N-term region of human Phospholamban (pS16/T17).
Specificity:	Recognizes endogenous levels of Phospholamban (pS16/T17) protein.
Characteristics:	Rabbit polyclonal antibody to Phospholamban (pS16/T17)
Purification:	The antibody was purified by immunogen affinity chromatography.

## Target Details

Target:	Phospholamban (PLN)
Alternative Name:	Phospholamban ( <a href="#">PLN Products</a> )
Background:	PLB, Cardiac phospholamban, PLB

## Target Details

Gene ID:	5350, 18821, 64672
UniProt:	<a href="#">P26678</a> , <a href="#">P61014</a> , <a href="#">P61016</a>
Pathways:	<a href="#">Negative Regulation of Transporter Activity</a>

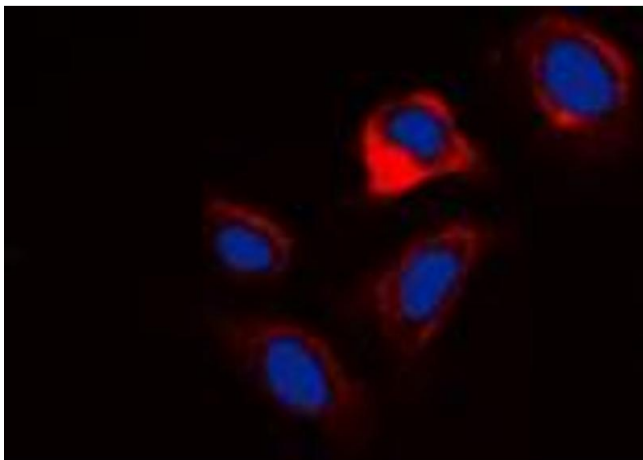
## Application Details

Application Notes:	WB (1:500 - 1:1000), IF/IC (1:100 - 1:500)
Restrictions:	For Research Use only

## Handling

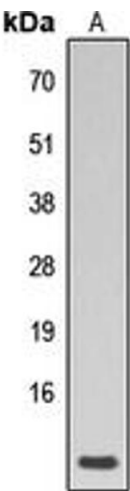
Format:	Liquid
Buffer:	Liquid in 0.42 % Potassium phosphate, 0.87 % Sodium chloride, pH 7.3, 30 % glycerol, and 0.01 % sodium azide.
Preservative:	Sodium azide
Precaution of Use:	This product contains Sodium azide: a POISONOUS AND HAZARDOUS SUBSTANCE which should be handled by trained staff only.
Storage:	-20 °C
Storage Comment:	Shipped at 4°C. Upon delivery aliquot and store at -20°C for one year. Avoid freeze/thaw cycles.
Expiry Date:	12 months

## Images



### Immunofluorescence

**Image 1.** Immunofluorescent analysis of Phospholamban (pS16/T17) staining in HuvEc cells. Formalin-fixed cells were permeabilized with 0.1% Triton X-100 in TBS for 5-10 minutes and blocked with 3% BSA-PBS for 30 minutes at room temperature. Cells were probed with the primary antibody in 3% BSA-PBS and incubated overnight at 4 °C in a humidified chamber. Cells were washed with PBST and incubated with a DyLight 594-conjugated secondary antibody (red) in PBS at room temperature in the dark. DAPI



was used to stain the cell nuclei (blue).

Western Blotting

**Image 2.** Western blot analysis of Phospholamban (pS16/T17) expression in human heart (A) whole cell lysates.