

Datasheet for ABIN7301140
anti-POLR2E antibody (Center)[Go to Product page](#)

2 Images

Overview

Quantity:	100 µL
Target:	POLR2E
Binding Specificity:	Center
Reactivity:	Human, Mouse, Rat, Monkey, Cow
Host:	Rabbit
Clonality:	Polyclonal
Conjugate:	This POLR2E antibody is un-conjugated
Application:	Western Blotting (WB), Immunohistochemistry (IHC)

Product Details

Immunogen:	KLH-conjugated synthetic peptide encompassing a sequence within the center region of human POLR2E.
Specificity:	Recognizes endogenous levels of POLR2E protein.
Characteristics:	Rabbit polyclonal antibody to POLR2E
Purification:	The antibody was purified by immunogen affinity chromatography.

Target Details

Target:	POLR2E
Alternative Name:	POLR2E (POLR2E Products)
Background:	DNA-directed RNA polymerases I, II, and III subunit RPABC1, RNA polymerases I, II, and III

Target Details

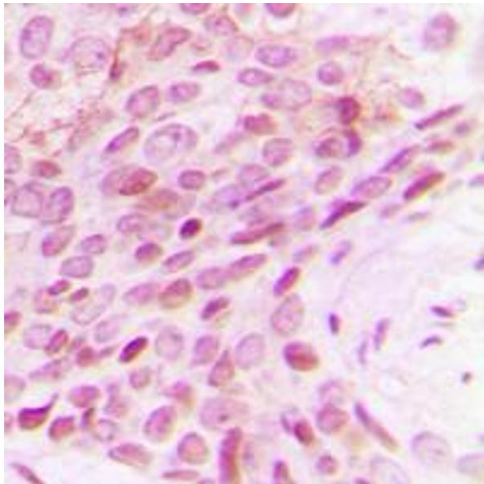
	subunit ABC1, DNA-directed RNA polymerase II 23 kDa polypeptide, DNA-directed RNA polymerase II subunit E, RPB5 homolog, XAP4
Gene ID:	5434, 66420, 690966
UniProt:	P19388 , Q80UW8 , B0BNE2
Pathways:	Regulatory RNA Pathways

Application Details

Application Notes:	WB (1:500 - 1:1000), IH (1:100 - 1:200)
Restrictions:	For Research Use only

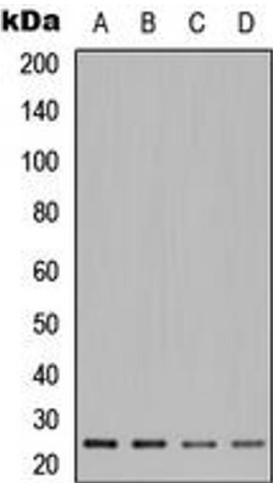
Handling

Format:	Liquid
Buffer:	Liquid in 0.42 % Potassium phosphate, 0.87 % Sodium chloride, pH 7.3, 30 % glycerol, and 0.01 % sodium azide.
Preservative:	Sodium azide
Precaution of Use:	This product contains Sodium azide: a POISONOUS AND HAZARDOUS SUBSTANCE which should be handled by trained staff only.
Storage:	-20 °C
Storage Comment:	Shipped at 4°C. Upon delivery aliquot and store at -20°C for one year. Avoid freeze/thaw cycles.
Expiry Date:	12 months



Immunohistochemistry

Image 1. Immunohistochemical analysis of POLR2E staining in human breast cancer formalin fixed paraffin embedded tissue section. The section was pre-treated using heat mediated antigen retrieval with sodium citrate buffer (pH 6.0). The section was then incubated with the antibody at room temperature and detected using an HRP conjugated compact polymer system. DAB was used as the chromogen. The section was then counterstained with haematoxylin and mounted with DPX.



Western Blotting

Image 2. Western blot analysis of POLR2E expression in A549 (A), Jurkat (B), HeLa (C), PC12 (D) whole cell lysates.