



Datasheet for ABIN7301170  
**anti-PTH1R antibody (Center)**



[Go to Product page](#)

3 Images

Overview

Quantity:	100 µL
Target:	PTH1R
Binding Specificity:	Center
Reactivity:	Human, Cow, Pig, Dog
Host:	Rabbit
Clonality:	Polyclonal
Conjugate:	This PTH1R antibody is un-conjugated
Application:	Western Blotting (WB), Immunohistochemistry (IHC), Immunofluorescence (IF), Immunochromatography (IC)

Product Details

Immunogen:	KLH-conjugated synthetic peptide encompassing a sequence within the center region of human PTHR1.
Specificity:	Recognizes endogenous levels of PTHR1 protein.
Characteristics:	Rabbit polyclonal antibody to PTHR1
Purification:	The antibody was purified by immunogen affinity chromatography.

Target Details

Target:	PTH1R
Alternative Name:	PTHR1 ( <a href="#">PTH1R Products</a> )

## Target Details

---

Background: PTHR, PTHR1, Parathyroid hormone/parathyroid hormone-related peptide receptor, PTH/PTHrP type I receptor, PTH/PTHr receptor, Parathyroid hormone 1 receptor, PTH1 receptor

Gene ID: 5745

UniProt: [Q03431](#)

Pathways: [Regulation of Carbohydrate Metabolic Process](#)

## Application Details

---

Application Notes: WB (1:500 - 1:1000), IH (1:100 - 1:200), IF/IC (1:100 - 1:500)

Restrictions: For Research Use only

## Handling

---

Format: Liquid

Buffer: Liquid in 0.42 % Potassium phosphate, 0.87 % Sodium chloride, pH 7.3, 30 % glycerol, and 0.01 % sodium azide.

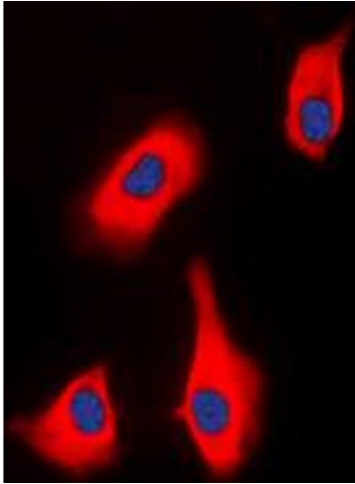
Preservative: Sodium azide

Precaution of Use: This product contains Sodium azide: a POISONOUS AND HAZARDOUS SUBSTANCE which should be handled by trained staff only.

Storage: -20 °C

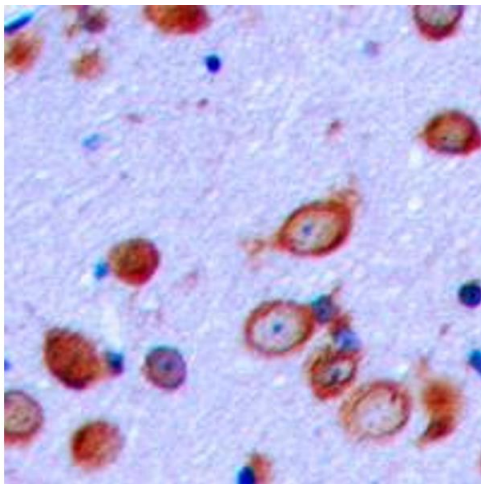
Storage Comment: Shipped at 4°C. Upon delivery aliquot and store at -20°C for one year. Avoid freeze/thaw cycles.

Expiry Date: 12 months



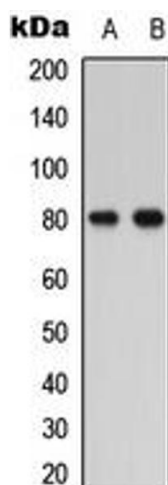
### Immunofluorescence

**Image 1.** Immunofluorescent analysis of PTHR1 staining in HEK293T cells. Formalin-fixed cells were permeabilized with 0.1% Triton X-100 in TBS for 5-10 minutes and blocked with 3% BSA-PBS for 30 minutes at room temperature. Cells were probed with the primary antibody in 3% BSA-PBS and incubated overnight at 4 °C in a humidified chamber. Cells were washed with PBST and incubated with a DyLight 594-conjugated secondary antibody (red) in PBS at room temperature in the dark. DAPI was used to stain the cell nuclei (blue).



### Immunohistochemistry

**Image 2.** Immunohistochemical analysis of PTHR1 staining in human brain formalin fixed paraffin embedded tissue section. The section was pre-treated using heat mediated antigen retrieval with sodium citrate buffer (pH 6.0). The section was then incubated with the antibody at room temperature and detected using an HRP conjugated compact polymer system. DAB was used as the chromogen. The section was then counterstained with haematoxylin and mounted with DPX.



### Western Blotting

**Image 3.** Western blot analysis of PTHR1 expression in HEK293T (A), COLO205 (B) whole cell lysates.