



[Go to Product page](#)

Datasheet for ABIN7301178

## anti-PTPN1 antibody (N-Term)

### 3 Images

#### Overview

Quantity:	100 µL
Target:	PTPN1
Binding Specificity:	N-Term
Reactivity:	Human, Mouse, Rat, Monkey, Zebrafish (Danio rerio), Dog, Chicken, Pig
Host:	Rabbit
Clonality:	Polyclonal
Conjugate:	This PTPN1 antibody is un-conjugated
Application:	Western Blotting (WB), Immunohistochemistry (IHC), Immunofluorescence (IF), Immunochromatography (IC)

#### Product Details

Immunogen:	KLH-conjugated synthetic peptide encompassing a sequence within the N-term region of human PTP1B.
Specificity:	Recognizes endogenous levels of PTP1B protein.
Characteristics:	Rabbit polyclonal antibody to PTP1B
Purification:	The antibody was purified by immunogen affinity chromatography.

#### Target Details

Target:	PTPN1
Alternative Name:	PTP1B ( <a href="#">PTPN1 Products</a> )

## Target Details

---

Background:	PTP1B, Tyrosine-protein phosphatase non-receptor type 1, Protein-tyrosine phosphatase 1B, PTP-1B
Gene ID:	5770, 19246, 24697
UniProt:	<a href="#">P18031</a> , <a href="#">P35821</a> , <a href="#">P20417</a>
Pathways:	<a href="#">TLR Signaling</a> , <a href="#">Response to Growth Hormone Stimulus</a> , <a href="#">ER-Nucleus Signaling</a> , <a href="#">Platelet-derived growth Factor Receptor Signaling</a>

## Application Details

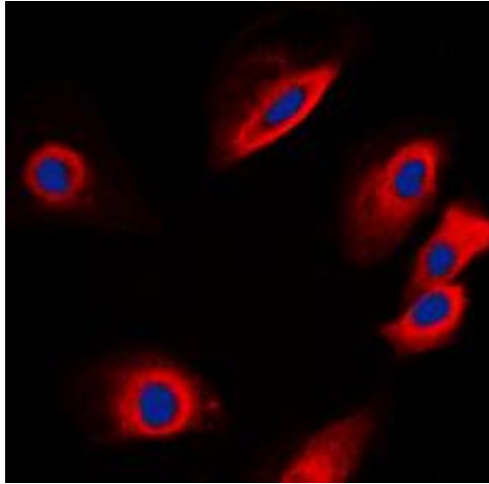
---

Application Notes:	WB (1:500 - 1:1000), IH (1:100 - 1:200), IF/IC (1:100 - 1:500)
Restrictions:	For Research Use only

## Handling

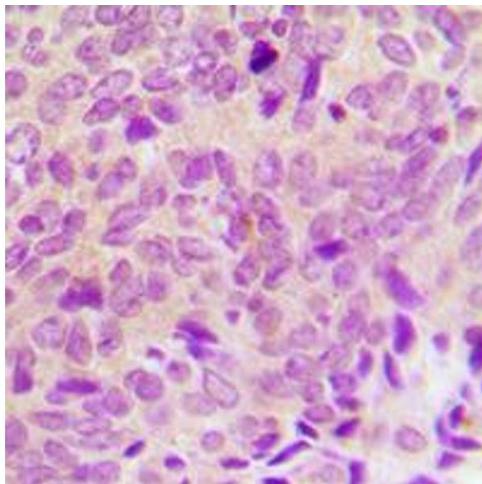
---

Format:	Liquid
Buffer:	Liquid in 0.42 % Potassium phosphate, 0.87 % Sodium chloride, pH 7.3, 30 % glycerol, and 0.01 % sodium azide.
Preservative:	Sodium azide
Precaution of Use:	This product contains Sodium azide: a POISONOUS AND HAZARDOUS SUBSTANCE which should be handled by trained staff only.
Storage:	-20 °C
Storage Comment:	Shipped at 4°C. Upon delivery aliquot and store at -20°C for one year. Avoid freeze/thaw cycles.
Expiry Date:	12 months



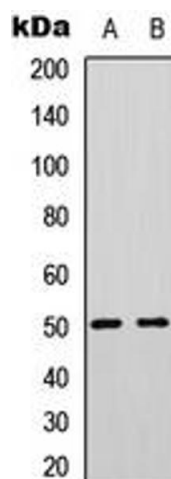
### Immunofluorescence

**Image 1.** Immunofluorescent analysis of PTP1B staining in SKNSH cells. Formalin-fixed cells were permeabilized with 0.1% Triton X-100 in TBS for 5-10 minutes and blocked with 3% BSA-PBS for 30 minutes at room temperature. Cells were probed with the primary antibody in 3% BSA-PBS and incubated overnight at 4 °C in a humidified chamber. Cells were washed with PBST and incubated with a DyLight 594-conjugated secondary antibody (red) in PBS at room temperature in the dark. DAPI was used to stain the cell nuclei (blue).



### Immunohistochemistry

**Image 2.** Immunohistochemical analysis of PTP1B staining in human breast cancer formalin fixed paraffin embedded tissue section. The section was pre-treated using heat mediated antigen retrieval with sodium citrate buffer (pH 6.0). The section was then incubated with the antibody at room temperature and detected using an HRP conjugated compact polymer system. DAB was used as the chromogen. The section was then counterstained with haematoxylin and mounted with DPX.



### Western Blotting

**Image 3.** Western blot analysis of PTP1B expression in HeLa (A), Jurkat (B) whole cell lysates.