



[Go to Product page](#)

Datasheet for ABIN7301190
anti-RAB11FIP1 antibody (N-Term)

2 Images

Overview

Quantity:	100 µL
Target:	RAB11FIP1
Binding Specificity:	N-Term
Reactivity:	Human, Mouse, Rat
Host:	Rabbit
Clonality:	Polyclonal
Conjugate:	This RAB11FIP1 antibody is un-conjugated
Application:	Western Blotting (WB), Immunohistochemistry (IHC)

Product Details

Immunogen:	KLH-conjugated synthetic peptide encompassing a sequence within the N-term region of human RAB11FIP1.
Specificity:	Recognizes endogenous levels of RAB11FIP1 protein.
Characteristics:	Rabbit polyclonal antibody to RAB11FIP1
Purification:	The antibody was purified by immunogen affinity chromatography.

Target Details

Target:	RAB11FIP1
Alternative Name:	RAB11FIP1 (RAB11FIP1 Products)
Background:	RCP, Rab11 family-interacting protein 1, Rab11-FIP1, Rab-coupling protein

Target Details

Gene ID: 80223, 75767, 498650

UniProt: [Q6WKZ4](#), [Q9D620](#), [Q3B7T9](#)

Application Details

Application Notes: WB (1:500 - 1:1000), IH (1:100 - 1:200)

Restrictions: For Research Use only

Handling

Format: Liquid

Buffer: Liquid in 0.42 % Potassium phosphate, 0.87 % Sodium chloride, pH 7.3, 30 % glycerol, and 0.01 % sodium azide.

Preservative: Sodium azide

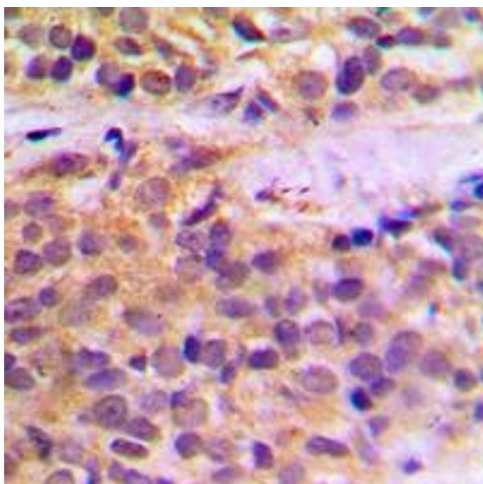
Precaution of Use: This product contains Sodium azide: a POISONOUS AND HAZARDOUS SUBSTANCE which should be handled by trained staff only.

Storage: -20 °C

Storage Comment: Shipped at 4°C. Upon delivery aliquot and store at -20°C for one year. Avoid freeze/thaw cycles.

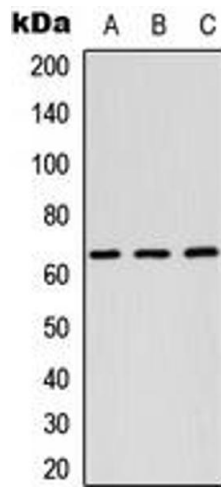
Expiry Date: 12 months

Images



Immunohistochemistry

Image 1. Immunohistochemical analysis of RAB11FIP1 staining in human prostate cancer formalin fixed paraffin embedded tissue section. The section was pre-treated using heat mediated antigen retrieval with sodium citrate buffer (pH 6.0). The section was then incubated with the antibody at room temperature and detected using an HRP conjugated compact polymer system. DAB was used as the chromogen. The section was then counterstained with haematoxylin and mounted with DPX.



Western Blotting

Image 2. Western blot analysis of RAB11FIP1 expression in HEK293T (A), Raw264.7 (B), H9C2 (C) whole cell lysates.