

Datasheet for ABIN7301192
anti-RAB41 antibody (Center)

2 Images

[Go to Product page](#)

Overview

Quantity:	100 µL
Target:	RAB41
Binding Specificity:	Center
Reactivity:	Human, Mouse, Rat
Host:	Rabbit
Clonality:	Polyclonal
Conjugate:	This RAB41 antibody is un-conjugated
Application:	Immunohistochemistry (IHC), Western Blotting (WB)

Product Details

Immunogen:	KLH-conjugated synthetic peptide encompassing a sequence within the center region of human RAB41.
Specificity:	Recognizes endogenous levels of RAB41 protein.
Characteristics:	Rabbit polyclonal antibody to RAB41
Purification:	The antibody was purified by immunogen affinity chromatography.

Target Details

Target:	RAB41
Alternative Name:	RAB41 (RAB41 Products)
Background:	Ras-related protein Rab-41

Target Details

Gene ID: 347517

UniProt: [Q5JT25](#)

Application Details

Application Notes: WB (1:500 - 1:1000), IH (1:100 - 1:200)

Restrictions: For Research Use only

Handling

Format: Liquid

Buffer: Liquid in 0.42 % Potassium phosphate, 0.87 % Sodium chloride, pH 7.3, 30 % glycerol, and 0.01 % sodium azide.

Preservative: Sodium azide

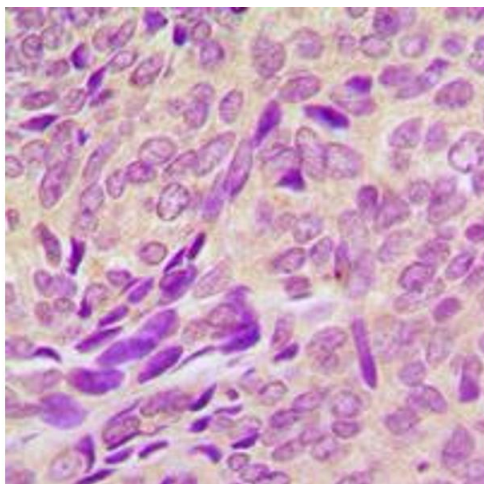
Precaution of Use: This product contains Sodium azide: a POISONOUS AND HAZARDOUS SUBSTANCE which should be handled by trained staff only.

Storage: -20 °C

Storage Comment: Shipped at 4°C. Upon delivery aliquot and store at -20°C for one year. Avoid freeze/thaw cycles.

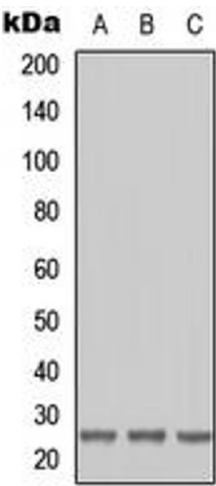
Expiry Date: 12 months

Images



Immunohistochemistry

Image 1. Immunohistochemical analysis of RAB41 staining in human breast cancer formalin fixed paraffin embedded tissue section. The section was pre-treated using heat mediated antigen retrieval with sodium citrate buffer (pH 6.0). The section was then incubated with the antibody at room temperature and detected using an HRP conjugated compact polymer system. DAB was used as the chromogen. The section was then counterstained with haematoxylin and mounted with DPX.



Western Blotting

Image 2. Western blot analysis of RAB41 expression in HEK293T (A), Raw264.7 (B), H9C2 (C) whole cell lysates.