

Datasheet for ABIN7301204  
**anti-AGPAT1 antibody (Center)**[Go to Product page](#)

## 2 Images

## Overview

Quantity:	100 µL
Target:	AGPAT1
Binding Specificity:	Center
Reactivity:	Human, Mouse, Rat, Cow
Host:	Rabbit
Clonality:	Polyclonal
Conjugate:	This AGPAT1 antibody is un-conjugated
Application:	Western Blotting (WB), Immunohistochemistry (IHC)

## Product Details

Immunogen:	KLH-conjugated synthetic peptide encompassing a sequence within the center region of human G15.
Specificity:	Recognizes endogenous levels of G15 protein.
Characteristics:	Rabbit polyclonal antibody to G15
Purification:	The antibody was purified by immunogen affinity chromatography.

## Target Details

Target:	AGPAT1
Alternative Name:	G15 ( <a href="#">AGPAT1 Products</a> )
Target Type:	Chemical

## Target Details

Background:	RNA-binding protein 5, Protein G15, Putative tumor suppressor LUCA15, RNA-binding motif protein 5, Renal carcinoma antigen NY-REN-9
Gene ID:	10181, 83486, 300996
UniProt:	<a href="#">P52756</a> , <a href="#">Q91YE7</a> , <a href="#">B2GV05</a>

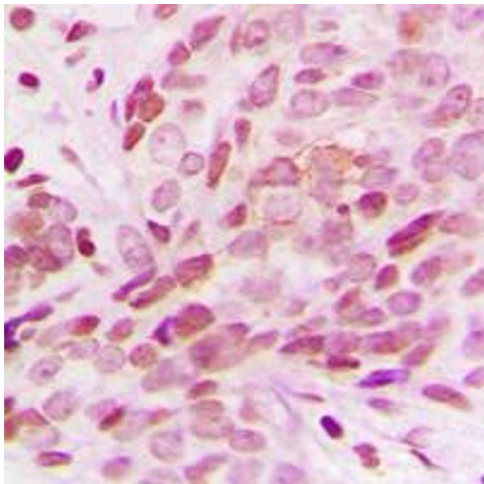
## Application Details

Application Notes:	WB (1:500 - 1:1000), IH (1:100 - 1:200)
Restrictions:	For Research Use only

## Handling

Format:	Liquid
Buffer:	Liquid in 0.42 % Potassium phosphate, 0.87 % Sodium chloride, pH 7.3, 30 % glycerol, and 0.01 % sodium azide.
Preservative:	Sodium azide
Precaution of Use:	This product contains Sodium azide: a POISONOUS AND HAZARDOUS SUBSTANCE which should be handled by trained staff only.
Storage:	-20 °C
Storage Comment:	Shipped at 4°C. Upon delivery aliquot and store at -20°C for one year. Avoid freeze/thaw cycles.
Expiry Date:	12 months

## Images



### Immunohistochemistry

**Image 1.** Immunohistochemical analysis of G15 staining in human breast cancer formalin fixed paraffin embedded tissue section. The section was pre-treated using heat mediated antigen retrieval with sodium citrate buffer (pH 6.0). The section was then incubated with the antibody at room temperature and detected using an HRP conjugad compact polymer system. DAB was used as the chromogen. The section was then counterstained with

haematoxylin and mounted with DPX.

Western Blotting

**Image 2.** Western blot analysis of G15 expression in RT4 (A), NIH3T3 (B) whole cell lysates.

