

Datasheet for ABIN7301218

## anti-Ret Proto-Oncogene antibody (C-Term, pTyr1062)



[Go to Product page](#)

### 3 Images

#### Overview

Quantity:	100 µL
Target:	Ret Proto-Oncogene (RET)
Binding Specificity:	C-Term, pTyr1062
Reactivity:	Human, Mouse, Rat, Monkey
Host:	Rabbit
Clonality:	Polyclonal
Conjugate:	This Ret Proto-Oncogene antibody is un-conjugated
Application:	Western Blotting (WB), Immunohistochemistry (IHC), Immunofluorescence (IF), Immunochromatography (IC)

#### Product Details

Immunogen:	KLH-conjugated synthetic peptide encompassing a sequence within the C-term region of human RET (pY1062).
Specificity:	Recognizes endogenous levels of RET (pY1062) protein.
Characteristics:	Rabbit polyclonal antibody to RET (pY1062)
Purification:	The antibody was purified by immunogen affinity chromatography.

#### Target Details

Target:	Ret Proto-Oncogene (RET)
Alternative Name:	RET ( <a href="#">RET Products</a> )

## Target Details

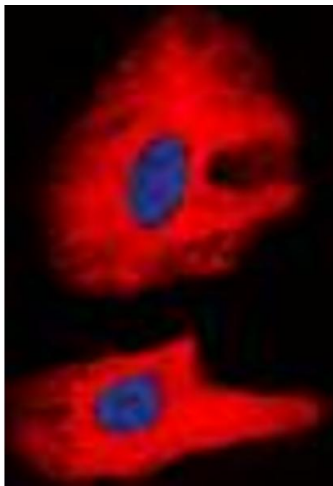
Background:	CDHF12, CDHR16, PTC, RET51, Proto-oncogene tyrosine-protein kinase receptor Ret, Cadherin family member 12, Proto-oncogene c-Ret
Gene ID:	5979, 19713, 24716
UniProt:	<a href="#">P07949</a> , <a href="#">P35546</a> , <a href="#">G3V9H8</a>
Pathways:	<a href="#">RTK Signaling</a> , <a href="#">Dopaminergic Neurogenesis</a> , <a href="#">Regulation of Cell Size</a> , <a href="#">Tube Formation</a>

## Application Details

Application Notes:	WB (1:500 - 1:1000), IH (1:100 - 1:200), IF/IC (1:100 - 1:500)
Restrictions:	For Research Use only

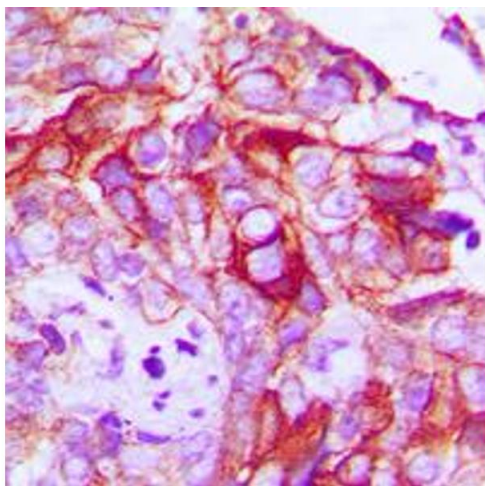
## Handling

Format:	Liquid
Buffer:	Liquid in 0.42 % Potassium phosphate, 0.87 % Sodium chloride, pH 7.3, 30 % glycerol, and 0.01 % sodium azide.
Preservative:	Sodium azide
Precaution of Use:	This product contains Sodium azide: a POISONOUS AND HAZARDOUS SUBSTANCE which should be handled by trained staff only.
Storage:	-20 °C
Storage Comment:	Shipped at 4°C. Upon delivery aliquot and store at -20°C for one year. Avoid freeze/thaw cycles.
Expiry Date:	12 months



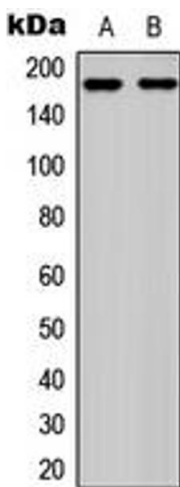
### Immunofluorescence

**Image 1.** Immunofluorescent analysis of RET (pY1062) staining in K562 cells. Formalin-fixed cells were permeabilized with 0.1% Triton X-100 in TBS for 5-10 minutes and blocked with 3% BSA-PBS for 30 minutes at room temperature. Cells were probed with the primary antibody in 3% BSA-PBS and incubated overnight at 4 °C in a humidified chamber. Cells were washed with PBST and incubated with a DyLight 594-conjugated secondary antibody (red) in PBS at room temperature in the dark. DAPI was used to stain the cell nuclei (blue).



### Immunohistochemistry

**Image 2.** Immunohistochemical analysis of RET (pY1062) staining in human breast cancer formalin fixed paraffin embedded tissue section. The section was pre-treated using heat mediated antigen retrieval with sodium citrate buffer (pH 6.0). The section was then incubated with the antibody at room temperature and detected using an HRP conjugated compact polymer system. DAB was used as the chromogen. The section was then counterstained with haematoxylin and mounted with DPX.



### Western Blotting

**Image 3.** Western blot analysis of RET (pY1062) expression in K562 (A), mouse brain (B) whole cell lysates.