

Datasheet for ABIN7301224
anti-Relaxin 3 antibody (Center)[Go to Product page](#)

1 Image

Overview

Quantity:	100 µL
Target:	Relaxin 3 (RLN3)
Binding Specificity:	Center
Reactivity:	Human, Mouse
Host:	Rabbit
Clonality:	Polyclonal
Conjugate:	This Relaxin 3 antibody is un-conjugated
Application:	Western Blotting (WB)

Product Details

Immunogen:	KLH-conjugated synthetic peptide encompassing a sequence within the center region of human Relaxin 3.
Specificity:	Recognizes endogenous levels of Relaxin 3 protein.
Characteristics:	Rabbit polyclonal antibody to Relaxin 3
Purification:	The antibody was purified by immunogen affinity chromatography.

Target Details

Target:	Relaxin 3 (RLN3)
Alternative Name:	Relaxin 3 (RLN3 Products)
Background:	INSL7, RXN3, ZINS4, Relaxin-3, Insulin-like peptide INSL7, Insulin-like peptide 7, Prorelaxin H3

Target Details

Gene ID:	117579, 212108
UniProt:	Q8WXF3 , Q8CHK2
Pathways:	Hormone Activity , cAMP Metabolic Process

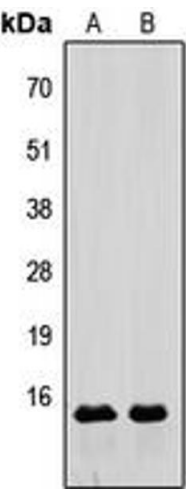
Application Details

Application Notes:	WB (1:500 - 1:1000)
Restrictions:	For Research Use only

Handling

Format:	Liquid
Buffer:	Liquid in 0.42 % Potassium phosphate, 0.87 % Sodium chloride, pH 7.3, 30 % glycerol, and 0.01 % sodium azide.
Preservative:	Sodium azide
Precaution of Use:	This product contains Sodium azide: a POISONOUS AND HAZARDOUS SUBSTANCE which should be handled by trained staff only.
Storage:	-20 °C
Storage Comment:	Shipped at 4°C. Upon delivery aliquot and store at -20°C for one year. Avoid freeze/thaw cycles.
Expiry Date:	12 months

Images



Western Blotting

Image 1. Western blot analysis of Relaxin 3 expression in HeLa (A), Raw264.7 (B) whole cell lysates.