



[Go to Product page](#)

Datasheet for ABIN7301236
anti-RPL22 antibody (Center)

2 Images

Overview

Quantity:	100 µL
Target:	RPL22
Binding Specificity:	Center
Reactivity:	Human, Mouse, Rat, Chicken, Pig, Monkey
Host:	Rabbit
Clonality:	Polyclonal
Conjugate:	This RPL22 antibody is un-conjugated
Application:	Western Blotting (WB), Immunohistochemistry (IHC)

Product Details

Immunogen:	KLH-conjugated synthetic peptide encompassing a sequence within the center region of human RPL22.
Specificity:	Recognizes endogenous levels of RPL22 protein.
Characteristics:	Rabbit polyclonal antibody to RPL22
Purification:	The antibody was purified by immunogen affinity chromatography.

Target Details

Target:	RPL22
Alternative Name:	RPL22 (RPL22 Products)
Background:	60S ribosomal protein L22, EBEB-associated protein, EAP, Epstein-Barr virus small RNA-

Target Details

associated protein, Heparin-binding protein HBp15

Gene ID: 6146, 102642602, 19934

UniProt: [P35268](#), [P67984](#), [P47198](#)

Application Details

Application Notes: WB (1:500 - 1:1000), IH (1:100 - 1:200)

Restrictions: For Research Use only

Handling

Format: Liquid

Buffer: Liquid in 0.42 % Potassium phosphate, 0.87 % Sodium chloride, pH 7.3, 30 % glycerol, and 0.01 % sodium azide.

Preservative: Sodium azide

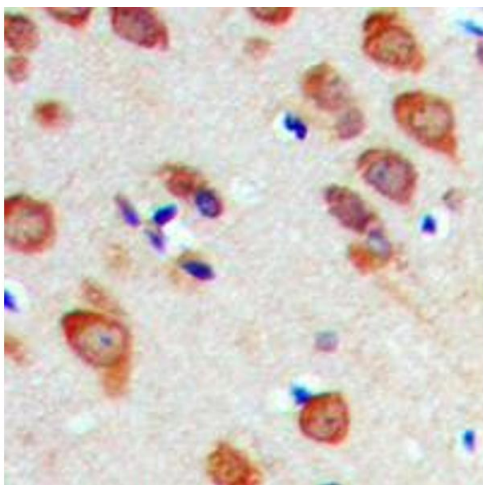
Precaution of Use: This product contains Sodium azide: a POISONOUS AND HAZARDOUS SUBSTANCE which should be handled by trained staff only.

Storage: -20 °C

Storage Comment: Shipped at 4°C. Upon delivery aliquot and store at -20°C for one year. Avoid freeze/thaw cycles.

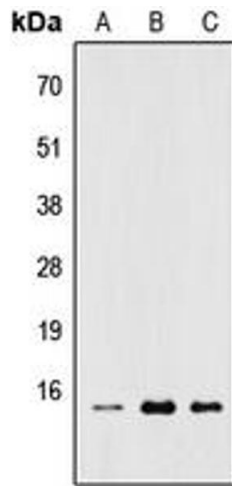
Expiry Date: 12 months

Images



Immunohistochemistry

Image 1. Immunohistochemical analysis of RPL22 staining in human brain formalin fixed paraffin embedded tissue section. The section was pre-treated using heat mediated antigen retrieval with sodium citrate buffer (pH 6.0). The section was then incubated with the antibody at room temperature and detected using an HRP conjugated compact polymer system. DAB was used as the chromogen. The section was then counterstained with haematoxylin and mounted with DPX.



Western Blotting

Image 2. Western blot analysis of RPL22 expression in HEK293T (A), Raw264.7 (B), H9C2 (C) whole cell lysates.