

Datasheet for ABIN7301246  
**anti-RPLP2 antibody (Center)**[Go to Product page](#)

## 2 Images

## Overview

|                      |   |
|----------------------|---|
| Quantity:            | 100 µL  |
| Target:              | RPLP2   |
| Binding Specificity: | Center  |
| Reactivity:          | Human, Mouse, Rat, Pig                            |
| Host:                | Rabbit  |
| Clonality:           | Polyclonal  |
| Conjugate:           | This RPLP2 antibody is un-conjugated              |
| Application:         | Immunohistochemistry (IHC), Western Blotting (WB) |

## Product Details

|                  |   |
|------------------|---|
| Immunogen:       | KLH-conjugated synthetic peptide encompassing a sequence within the center region of human RPLP2. |
| Specificity:     | Recognizes endogenous levels of RPLP2 protein.  |
| Characteristics: | Rabbit polyclonal antibody to RPLP2   |
| Purification:    | The antibody was purified by immunogen affinity chromatography.                                   |

## Target Details

|                   |   |
|-------------------|---|
| Target:           | RPLP2   |
| Alternative Name: | RPLP2 ( <a href="#">RPLP2 Products</a> )  |
| Background:       | D11S2243E, RPP2, 60S acidic ribosomal protein P2, Renal carcinoma antigen NY-REN-44 |

## Target Details

|          |  |
|----------|--|
| Gene ID: | 6181, 67186, 100911575   |
| UniProt: | <a href="#">P05387</a> , <a href="#">P99027</a> , <a href="#">P02401</a> |

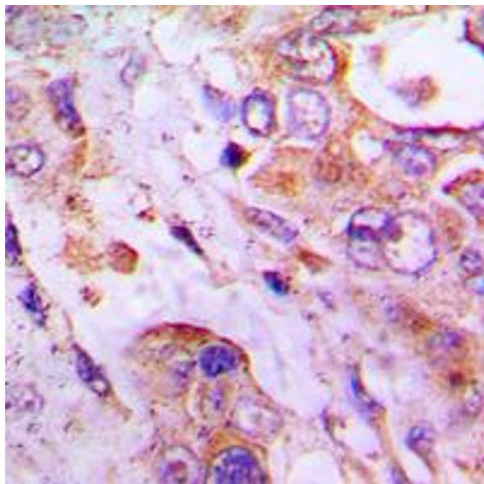
## Application Details

|                    |   |
|--------------------|---|
| Application Notes: | WB (1:500 - 1:1000), IH (1:100 - 1:200) |
| Restrictions:      | For Research Use only                   |

## Handling

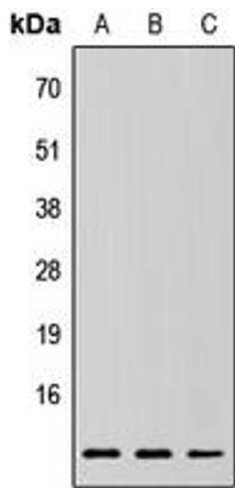
|                    |  |
|--------------------|--|
| Format:            | Liquid   |
| Buffer:            | Liquid in 0.42 % Potassium phosphate, 0.87 % Sodium chloride, pH 7.3, 30 % glycerol, and 0.01 % sodium azide.          |
| Preservative:      | Sodium azide   |
| Precaution of Use: | This product contains Sodium azide: a POISONOUS AND HAZARDOUS SUBSTANCE which should be handled by trained staff only. |
| Storage:           | -20 °C   |
| Storage Comment:   | Shipped at 4°C. Upon delivery aliquot and store at -20°C for one year. Avoid freeze/thaw cycles.                       |
| Expiry Date:       | 12 months  |

## Images



### Immunohistochemistry

**Image 1.** Immunohistochemical analysis of RPLP2 staining in human lung cancer formalin fixed paraffin embedded tissue section. The section was pre-treated using heat mediated antigen retrieval with sodium citrate buffer (pH 6.0). The section was then incubated with the antibody at room temperature and detected using an HRP conjugated compact polymer system. DAB was used as the chromogen. The section was then counterstained with haematoxylin and mounted with DPX.



Western Blotting

**Image 2.** Western blot analysis of RPLP2 expression in HEK293T (A), Raw264.7 (B), H9C2 (C) whole cell lysates.