

Datasheet for ABIN7301256
anti-RPS6KA6 antibody (C-Term)

2 Images

[Go to Product page](#)

Overview

Quantity:	100 µL
Target:	RPS6KA6
Binding Specificity:	C-Term
Reactivity:	Human, Monkey
Host:	Rabbit
Clonality:	Polyclonal
Conjugate:	This RPS6KA6 antibody is un-conjugated
Application:	Western Blotting (WB), Immunohistochemistry (IHC)

Product Details

Immunogen:	KLH-conjugated synthetic peptide encompassing a sequence within the C-term region of human RSK4.
Specificity:	Recognizes endogenous levels of RSK4 protein.
Characteristics:	Rabbit polyclonal antibody to RSK4
Purification:	The antibody was purified by immunogen affinity chromatography.

Target Details

Target:	RPS6KA6
Alternative Name:	RSK4 (RPS6KA6 Products)
Background:	RSK4, Ribosomal protein S6 kinase alpha-6, S6K-alpha-6, 90 kDa ribosomal protein S6 kinase 6,

Target Details

	p90-RSK 6, p90RSK6, Ribosomal S6 kinase 4, RSK-4, pp90RSK4
Gene ID:	27330
UniProt:	Q9UK32 , Q7TPS0
Pathways:	MAPK Signaling

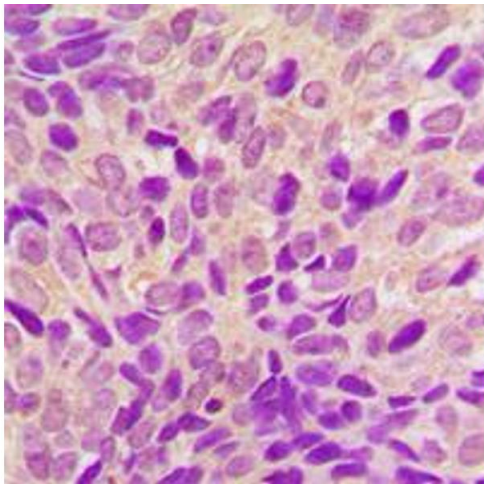
Application Details

Application Notes:	WB (1:500 - 1:1000), IH (1:100 - 1:200)
Restrictions:	For Research Use only

Handling

Format:	Liquid
Buffer:	Liquid in 0.42 % Potassium phosphate, 0.87 % Sodium chloride, pH 7.3, 30 % glycerol, and 0.01 % sodium azide.
Preservative:	Sodium azide
Precaution of Use:	This product contains Sodium azide: a POISONOUS AND HAZARDOUS SUBSTANCE which should be handled by trained staff only.
Storage:	-20 °C
Storage Comment:	Shipped at 4°C. Upon delivery aliquot and store at -20°C for one year. Avoid freeze/thaw cycles.
Expiry Date:	12 months

Images



Immunohistochemistry

Image 1. Immunohistochemical analysis of RSK4 staining in human breast cancer formalin fixed paraffin embedded tissue section. The section was pre-treated using heat mediated antigen retrieval with sodium citrate buffer (pH 6.0). The section was then incubated with the antibody at room temperature and detected using an HRP conjugated compact polymer system. DAB was used as the chromogen. The section was then counterstained with

haematoxylin and mounted with DPX.

Western Blotting

Image 2. Western blot analysis of RSK4 expression in HeLa (A), HepG2 (B) whole cell lysates.

