

Datasheet for ABIN7301278
anti-SH2D1A antibody (Center)



[Go to Product page](#)

1 Image

Overview

Quantity:	100 µL
Target:	SH2D1A
Binding Specificity:	Center
Reactivity:	Human, Mouse, Rat, Pig, Cow, Monkey
Host:	Rabbit
Clonality:	Polyclonal
Conjugate:	This SH2D1A antibody is un-conjugated
Application:	Western Blotting (WB)

Product Details

Immunogen:	KLH-conjugated synthetic peptide encompassing a sequence within the center region of human SH2D1A.
Specificity:	Recognizes endogenous levels of SH2D1A protein.
Characteristics:	Rabbit polyclonal antibody to SH2D1A
Purification:	The antibody was purified by immunogen affinity chromatography.

Target Details

Target:	SH2D1A
Alternative Name:	SH2D1A (SH2D1A Products)
Background:	DSHP, SAP, SH2 domain-containing protein 1A, Duncan disease SH2-protein, Signaling

Target Details

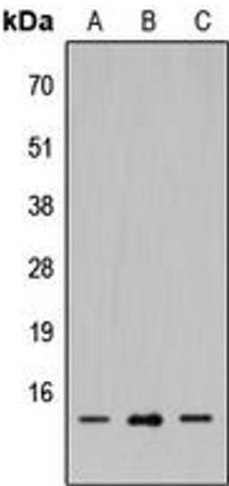
	lymphocytic activation molecule-associated protein, SLAM-associated protein, T-cell signal transduction molecule SAP
Gene ID:	4068, 20400, 501502
UniProt:	O60880 , O88890 , B2RZ59
Pathways:	Regulation of Leukocyte Mediated Immunity , Positive Regulation of Immune Effector Process

Application Details

Application Notes:	WB (1:500 - 1:1000)
Restrictions:	For Research Use only

Handling

Format:	Liquid
Buffer:	Liquid in 0.42 % Potassium phosphate, 0.87 % Sodium chloride, pH 7.3, 30 % glycerol, and 0.01 % sodium azide.
Preservative:	Sodium azide
Precaution of Use:	This product contains Sodium azide: a POISONOUS AND HAZARDOUS SUBSTANCE which should be handled by trained staff only.
Storage:	-20 °C
Storage Comment:	Shipped at 4°C. Upon delivery aliquot and store at -20°C for one year. Avoid freeze/thaw cycles.
Expiry Date:	12 months



Western Blotting

Image 1. Western blot analysis of SH2D1A expression in HEK293T (A), Raw264.7 (B), PC12 (C) whole cell lysates.