

Datasheet for ABIN7301280
anti-SH2D4A antibody (Center)

2 Images

[Go to Product page](#)

Overview

Quantity:	100 µL
Target:	SH2D4A
Binding Specificity:	Center
Reactivity:	Human, Mouse, Rat
Host:	Rabbit
Clonality:	Polyclonal
Conjugate:	This SH2D4A antibody is un-conjugated
Application:	Western Blotting (WB), Immunohistochemistry (IHC)

Product Details

Immunogen:	KLH-conjugated synthetic peptide encompassing a sequence within the center region of human SH2D4A.
Specificity:	Recognizes endogenous levels of SH2D4A protein.
Characteristics:	Rabbit polyclonal antibody to SH2D4A
Purification:	The antibody was purified by immunogen affinity chromatography.

Target Details

Target:	SH2D4A
Alternative Name:	SH2D4A (SH2D4A Products)
Background:	PPP1R38, SH2A, SH2 domain-containing protein 4A, Protein SH(2)A, Protein phosphatase 1

Target Details

	regulatory subunit 38
Gene ID:	63898, 72281, 306376
UniProt:	Q9H788 , Q9D7V1 , Q6AYC8

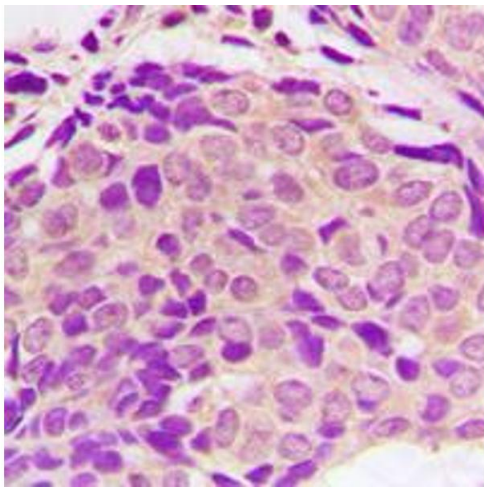
Application Details

Application Notes:	WB (1:500 - 1:1000), IH (1:100 - 1:200)
Restrictions:	For Research Use only

Handling

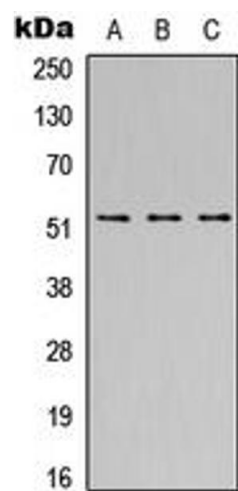
Format:	Liquid
Buffer:	Liquid in 0.42 % Potassium phosphate, 0.87 % Sodium chloride, pH 7.3, 30 % glycerol, and 0.01 % sodium azide.
Preservative:	Sodium azide
Precaution of Use:	This product contains Sodium azide: a POISONOUS AND HAZARDOUS SUBSTANCE which should be handled by trained staff only.
Storage:	-20 °C
Storage Comment:	Shipped at 4°C. Upon delivery aliquot and store at -20°C for one year. Avoid freeze/thaw cycles.
Expiry Date:	12 months

Images



Immunohistochemistry

Image 1. Immunohistochemical analysis of SH2D4A staining in human breast cancer formalin fixed paraffin embedded tissue section. The section was pre-treated using heat mediated antigen retrieval with sodium citrate buffer (pH 6.0). The section was then incubated with the antibody at room temperature and detected using an HRP conjugated compact polymer system. DAB was used as the chromogen. The section was then counterstained with haematoxylin and mounted with DPX.



Western Blotting

Image 2. Western blot analysis of SH2D4A expression in HEK293T (A), Raw264.7 (B), PC12 (C) whole cell lysates.