

Datasheet for ABIN7301282  
**anti-SH3BGRL3 antibody (Center)**[Go to Product page](#)

## 1 Image

## Overview

Quantity:	100 µL
Target:	SH3BGRL3
Binding Specificity:	Center
Reactivity:	Human, Mouse, Rat, Cow, Monkey, Rabbit
Host:	Rabbit
Clonality:	Polyclonal
Conjugate:	This SH3BGRL3 antibody is un-conjugated
Application:	Western Blotting (WB)

## Product Details

Immunogen:	KLH-conjugated synthetic peptide encompassing a sequence within the center region of human SH3BGRL3.
Specificity:	Recognizes endogenous levels of SH3BGRL3 protein.
Characteristics:	Rabbit polyclonal antibody to SH3BGRL3
Purification:	The antibody was purified by immunogen affinity chromatography.

## Target Details

Target:	SH3BGRL3
Alternative Name:	SH3BGRL3 ( <a href="#">SH3BGRL3 Products</a> )
Background:	SH3 domain-binding glutamic acid-rich-like protein 3, SH3 domain-binding protein 1, SH3BP-1

## Target Details

Gene ID:	83442, 73723
UniProt:	<a href="#">Q9H299, Q91VW3</a>
Pathways:	<a href="#">Cell RedoxHomeostasis</a>

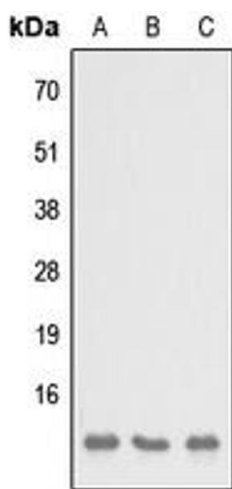
## Application Details

Application Notes:	WB (1:500 - 1:1000)
Restrictions:	For Research Use only

## Handling

Format:	Liquid
Buffer:	Liquid in 0.42 % Potassium phosphate, 0.87 % Sodium chloride, pH 7.3, 30 % glycerol, and 0.01 % sodium azide.
Preservative:	Sodium azide
Precaution of Use:	This product contains Sodium azide: a POISONOUS AND HAZARDOUS SUBSTANCE which should be handled by trained staff only.
Storage:	-20 °C
Storage Comment:	Shipped at 4°C. Upon delivery aliquot and store at -20°C for one year. Avoid freeze/thaw cycles.
Expiry Date:	12 months

## Images



### Western Blotting

**Image 1.** Western blot analysis of SH3BGRL3 expression in HEK293T (A), NS-1 (B), H9C2 (C) whole cell lysates.