

Datasheet for ABIN7301288
anti-SIAH2 antibody (C-Term)

3 Images

[Go to Product page](#)

Overview

Quantity:	100 µL
Target:	SIAH2
Binding Specificity:	C-Term
Reactivity:	Human, Mouse, Rat, Zebrafish (Danio rerio)
Host:	Rabbit
Clonality:	Polyclonal
Conjugate:	This SIAH2 antibody is un-conjugated
Application:	Western Blotting (WB), Immunohistochemistry (IHC), Immunofluorescence (IF), Immunochromatography (IC)

Product Details

Immunogen:	KLH-conjugated synthetic peptide encompassing a sequence within the C-term region of human SIAH2.
Specificity:	Recognizes endogenous levels of SIAH2 protein.
Characteristics:	Rabbit polyclonal antibody to SIAH2
Purification:	The antibody was purified by immunogen affinity chromatography.

Target Details

Target:	SIAH2
Alternative Name:	SIAH2 (SIAH2 Products)

Target Details

Background:	E3 ubiquitin-protein ligase SIAH2, Seven in absentia homolog 2, Siah-2, hSiah2
Gene ID:	6478, 20439, 140593
UniProt:	O43255 , Q06986 , Q8R4T2

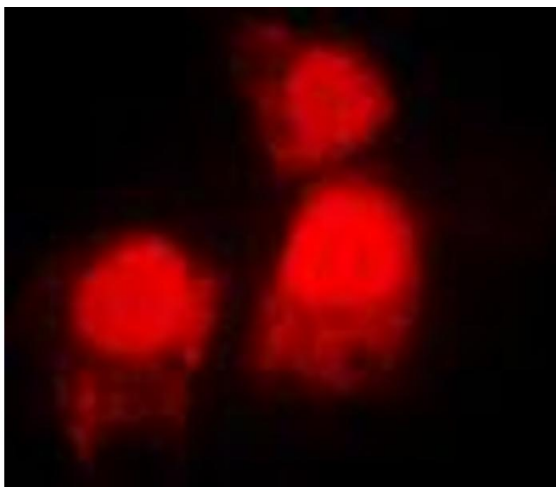
Application Details

Application Notes:	WB (1:500 - 1:1000), IH (1:100 - 1:200), IF/IC (1:100 - 1:500)
Restrictions:	For Research Use only

Handling

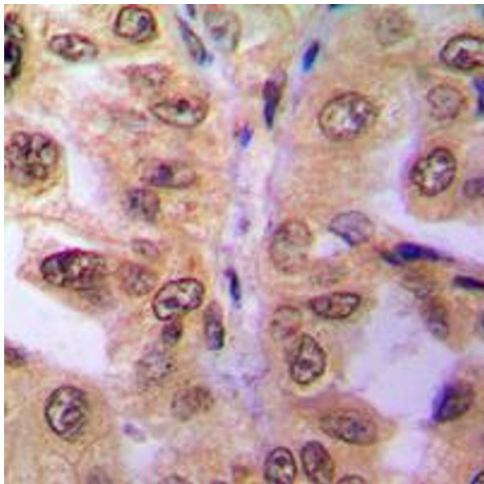
Format:	Liquid
Buffer:	Liquid in 0.42 % Potassium phosphate, 0.87 % Sodium chloride, pH 7.3, 30 % glycerol, and 0.01 % sodium azide.
Preservative:	Sodium azide
Precaution of Use:	This product contains Sodium azide: a POISONOUS AND HAZARDOUS SUBSTANCE which should be handled by trained staff only.
Storage:	-20 °C
Storage Comment:	Shipped at 4°C. Upon delivery aliquot and store at -20°C for one year. Avoid freeze/thaw cycles.
Expiry Date:	12 months

Images



Immunofluorescence

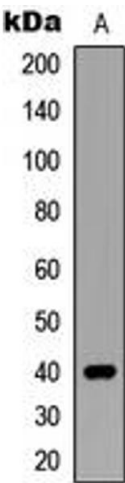
Image 1. Immunofluorescent analysis of SIAH2 staining in MCF7 cells. Formalin-fixed cells were permeabilized with 0.1% Triton X-100 in TBS for 5-10 minutes and blocked with 3% BSA-PBS for 30 minutes at room temperature. Cells were probed with the primary antibody in 3% BSA-PBS and incubated overnight at 4 °C in a humidified chamber. Cells were washed with PBST and incubated with a DyLight 594-conjugated secondary antibody (red) in PBS at room temperature in the dark. DAPI was used to stain the cell



nuclei (blue).

Immunohistochemistry

Image 2. Immunohistochemical analysis of SIAH2 staining in human breast cancer formalin fixed paraffin embedded tissue section. The section was pre-treated using heat mediated antigen retrieval with sodium citrate buffer (pH 6.0). The section was then incubated with the antibody at room temperature and detected using an HRP conjugad compact polymer system. DAB was used as the chromogen. The section was then counterstained with haematoxylin and mounted with DPX.



Western Blotting

Image 3. Western blot analysis of SIAH2 expression in MCF7 (A) whole cell lysates.