

Datasheet for ABIN7301292
anti-SLC44A1 antibody (Center)



[Go to Product page](#)

1 Image

Overview

Quantity:	100 µL
Target:	SLC44A1
Binding Specificity:	Center
Reactivity:	Human, Mouse, Rat, Monkey
Host:	Rabbit
Clonality:	Polyclonal
Conjugate:	This SLC44A1 antibody is un-conjugated
Application:	Western Blotting (WB)

Product Details

Immunogen:	KLH-conjugated synthetic peptide encompassing a sequence within the center region of human CD92.
Specificity:	Recognizes endogenous levels of CD92 protein.
Characteristics:	Rabbit polyclonal antibody to CD92
Purification:	The antibody was purified by immunogen affinity chromatography.

Target Details

Target:	SLC44A1
Alternative Name:	CD92 (SLC44A1 Products)
Background:	CD92, CDW92, CTL1, Choline transporter-like protein 1, CDw92, Solute carrier family 44

Target Details

	member 1, CD92
Gene ID:	23446, 100434, 85254
UniProt:	Q8WWI5 , Q6X893 , Q8VII6

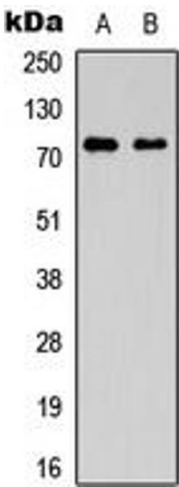
Application Details

Application Notes:	WB (1:500 - 1:1000)
Restrictions:	For Research Use only

Handling

Format:	Liquid
Buffer:	Liquid in 0.42 % Potassium phosphate, 0.87 % Sodium chloride, pH 7.3, 30 % glycerol, and 0.01 % sodium azide.
Preservative:	Sodium azide
Precaution of Use:	This product contains Sodium azide: a POISONOUS AND HAZARDOUS SUBSTANCE which should be handled by trained staff only.
Storage:	-20 °C
Storage Comment:	Shipped at 4°C. Upon delivery aliquot and store at -20°C for one year. Avoid freeze/thaw cycles.
Expiry Date:	12 months

Images



Western Blotting

Image 1. Western blot analysis of CD92 expression in A549 (A), Jurkat (B) whole cell lysates.