

Datasheet for ABIN7301296
anti-SLC5A3 antibody (Center)[Go to Product page](#)

2 Images

Overview

Quantity:	100 µL
Target:	SLC5A3
Binding Specificity:	Center
Reactivity:	Human, Rat, Cow, Dog, Rabbit, Pig
Host:	Rabbit
Clonality:	Polyclonal
Conjugate:	This SLC5A3 antibody is un-conjugated
Application:	Western Blotting (WB), Immunohistochemistry (IHC)

Product Details

Immunogen:	KLH-conjugated synthetic peptide encompassing a sequence within the center region of human SMIT1.
Specificity:	Recognizes endogenous levels of SMIT1 protein.
Characteristics:	Rabbit polyclonal antibody to SMIT1
Purification:	The antibody was purified by immunogen affinity chromatography.

Target Details

Target:	SLC5A3
Alternative Name:	SMIT1 (SLC5A3 Products)
Background:	Sodium/myo-inositol cotransporter, Na(+)/myo-inositol cotransporter, Sodium/myo-inositol

Target Details

	transporter 1, SMIT1, Solute carrier family 5 member 3
Gene ID:	6526, 53881
UniProt:	P53794 , Q9JKZ2
Pathways:	Inositol Metabolic Process

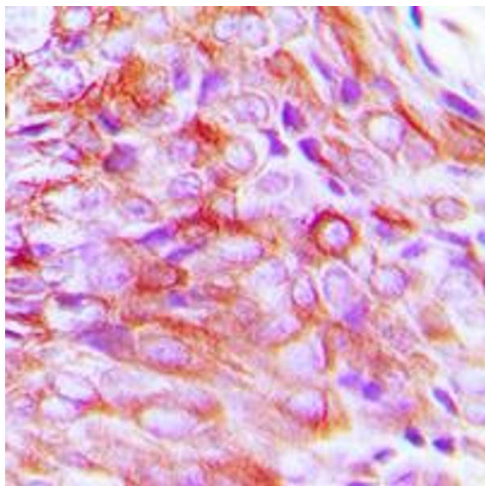
Application Details

Application Notes:	WB (1:500 - 1:1000), IH (1:100 - 1:200)
Restrictions:	For Research Use only

Handling

Format:	Liquid
Buffer:	Liquid in 0.42 % Potassium phosphate, 0.87 % Sodium chloride, pH 7.3, 30 % glycerol, and 0.01 % sodium azide.
Preservative:	Sodium azide
Precaution of Use:	This product contains Sodium azide: a POISONOUS AND HAZARDOUS SUBSTANCE which should be handled by trained staff only.
Storage:	-20 °C
Storage Comment:	Shipped at 4°C. Upon delivery aliquot and store at -20°C for one year. Avoid freeze/thaw cycles.
Expiry Date:	12 months

Images



Immunohistochemistry

Image 1. Immunohistochemical analysis of SMIT1 staining in human breast cancer formalin fixed paraffin embedded tissue section. The section was pre-treated using heat mediated antigen retrieval with sodium citrate buffer (pH 6.0). The section was then incubated with the antibody at room temperature and detected using an HRP conjugated compact polymer system. DAB was used as the chromogen. The section was then counterstained with

haematoxylin and mounted with DPX.

Western Blotting

Image 2. Western blot analysis of SMIT1 expression in human prostate (A), rat kidney (B) whole cell lysates.

