



Datasheet for ABIN7301300

anti-Smad1/9 antibody (C-Term, pSer465, pSer467)



[Go to Product page](#)

2 Images

Overview

Quantity:	100 µL
Target:	Smad1/9
Binding Specificity:	C-Term, pSer465, pSer467
Reactivity:	Human, Mouse, Rat, Cow, Zebrafish (Danio rerio)
Host:	Rabbit
Clonality:	Polyclonal
Conjugate:	This Smad1/9 antibody is un-conjugated
Application:	Western Blotting (WB), Immunohistochemistry (IHC)

Product Details

Immunogen:	KLH-conjugated synthetic peptide encompassing a sequence within the C-term region of human SMAD1/9 (pS465/467).
Specificity:	Recognizes endogenous levels of SMAD1/9 (pS465/467) protein.
Characteristics:	Rabbit polyclonal antibody to SMAD1/9 (pS465/467)
Purification:	The antibody was purified by immunogen affinity chromatography.

Target Details

Target:	Smad1/9
Abstract:	Smad1/9 Products
Background:	SMAD1, BSP1, MADH1, MADR1, Mothers against decapentaplegic homolog 1, MAD homolog 1,

Target Details

Mothers against DPP homolog 1, JV4-1, Mad-related protein 1, SMAD family member 1, SMAD 1, Smad1, hSMAD1, Transforming growth factor-beta-signaling protein 1, BSP-1

Gene ID: 4086, 17125

UniProt: [Q15797](#), [O15198](#), [P70340](#), [P97588](#)

Application Details

Application Notes: WB (1:500 - 1:1000), IH (1:100 - 1:200)

Restrictions: For Research Use only

Handling

Format: Liquid

Buffer: Liquid in 0.42 % Potassium phosphate, 0.87 % Sodium chloride, pH 7.3, 30 % glycerol, and 0.01 % sodium azide.

Preservative: Sodium azide

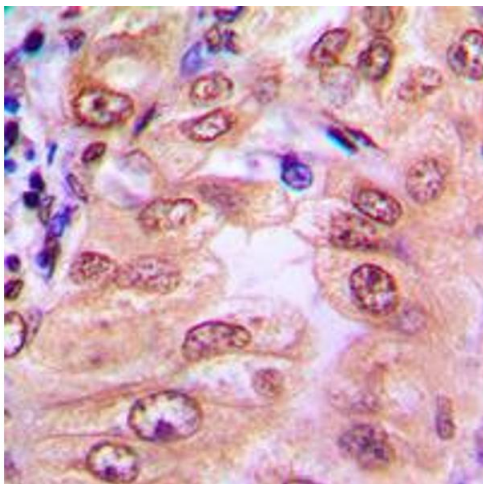
Precaution of Use: This product contains Sodium azide: a POISONOUS AND HAZARDOUS SUBSTANCE which should be handled by trained staff only.

Storage: -20 °C

Storage Comment: Shipped at 4°C. Upon delivery aliquot and store at -20°C for one year. Avoid freeze/thaw cycles.

Expiry Date: 12 months

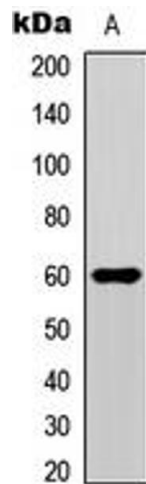
Images



Immunohistochemistry

Image 1. Immunohistochemical analysis of SMAD1/9 (pS465/467) staining in human breast cancer formalin fixed paraffin embedded tissue section. The section was pre-treated using heat mediated antigen retrieval with sodium citrate buffer (pH 6.0). The section was then incubated with the antibody at room temperature and detected using an HRP conjugated compact polymer system. DAB was used as the chromogen. The section was then counterstained with

haematoxylin and mounted with DPX.



Western Blotting

Image 2. Western blot analysis of SMAD1/9 (pS465/467) expression in HeLa (A) whole cell lysates.