

Datasheet for ABIN7301342

## anti-Stathmin 1 antibody (N-Term)

### 3 Images



[Go to Product page](#)

### Overview

Quantity:	100 µL
Target:	Stathmin 1 (STMN1)
Binding Specificity:	N-Term
Reactivity:	Human, Mouse, Rat, Monkey, Cow, Pig, Dog, Rabbit, Sheep
Host:	Rabbit
Clonality:	Polyclonal
Conjugate:	This Stathmin 1 antibody is un-conjugated
Application:	Western Blotting (WB), Immunohistochemistry (IHC), Immunofluorescence (IF), Immunochromatography (IC)

### Product Details

Immunogen:	KLH-conjugated synthetic peptide encompassing a sequence within the N-term region of human STMN1.
Specificity:	Recognizes endogenous levels of STMN1 protein.
Characteristics:	Rabbit polyclonal antibody to STMN1
Purification:	The antibody was purified by immunogen affinity chromatography.

### Target Details

Target:	Stathmin 1 (STMN1)
Alternative Name:	STMN1 ( <a href="#">STMN1 Products</a> )

### Target Details

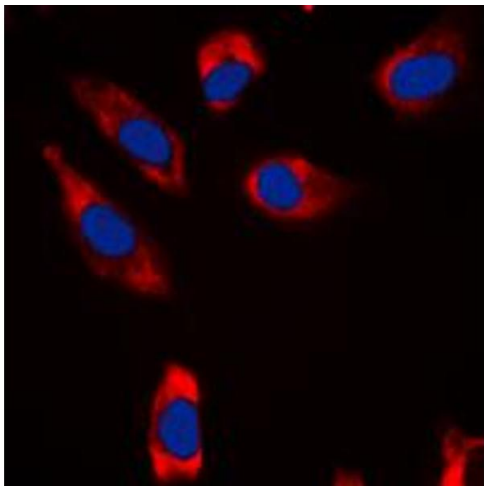
Background:	C1orf215, LAP18, OP18, Stathmin, Leukemia-associated phosphoprotein p18, Metablastin, Oncoprotein 18, Op18, Phosphoprotein p19, pp19, Prosolin, Protein Pr22, pp17
Gene ID:	3925, 16765, 29332
UniProt:	<a href="#">P16949</a> , <a href="#">P54227</a> , <a href="#">P13668</a>
Pathways:	<a href="#">MAPK Signaling</a> , <a href="#">Microtubule Dynamics</a>

### Application Details

Application Notes:	WB (1:500 - 1:1000), IH (1:100 - 1:200), IF/IC (1:100 - 1:500)
Restrictions:	For Research Use only

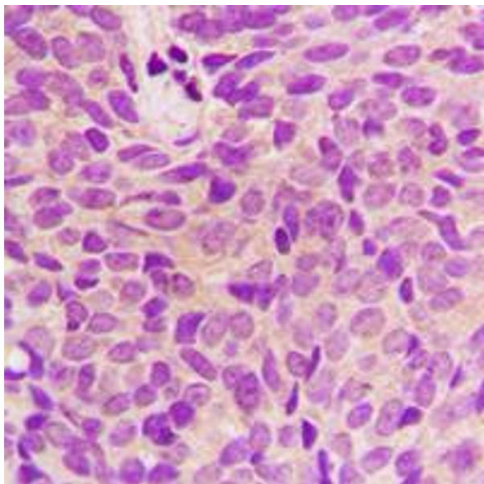
### Handling

Format:	Liquid
Buffer:	Liquid in 0.42 % Potassium phosphate, 0.87 % Sodium chloride, pH 7.3, 30 % glycerol, and 0.01 % sodium azide.
Preservative:	Sodium azide
Precaution of Use:	This product contains Sodium azide: a POISONOUS AND HAZARDOUS SUBSTANCE which should be handled by trained staff only.
Storage:	-20 °C
Storage Comment:	Shipped at 4°C. Upon delivery aliquot and store at -20°C for one year. Avoid freeze/thaw cycles.
Expiry Date:	12 months



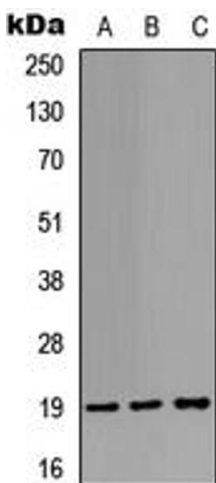
#### Immunofluorescence

**Image 1.** Immunofluorescent analysis of STMN1 staining in HeLa cells. Formalin-fixed cells were permeabilized with 0.1% Triton X-100 in TBS for 5-10 minutes and blocked with 3% BSA-PBS for 30 minutes at room temperature. Cells were probed with the primary antibody in 3% BSA-PBS and incubated overnight at 4 °C in a humidified chamber. Cells were washed with PBST and incubated with a DyLight 594-conjugated secondary antibody (red) in PBS at room temperature in the dark. DAPI was used to stain the cell nuclei (blue).



#### Immunohistochemistry

**Image 2.** Immunohistochemical analysis of STMN1 staining in human breast cancer formalin fixed paraffin embedded tissue section. The section was pre-treated using heat mediated antigen retrieval with sodium citrate buffer (pH 6.0). The section was then incubated with the antibody at room temperature and detected using an HRP conjugated compact polymer system. DAB was used as the chromogen. The section was then counterstained with haematoxylin and mounted with DPX.



#### Western Blotting

**Image 3.** Western blot analysis of STMN1 expression in HEK293T (A), HeLa (B), rat muscle (C) whole cell lysates.