

Datasheet for ABIN7301364
anti-TCEAL8 antibody (Center)[Go to Product page](#)

1 Image

Overview

Quantity:	100 µL
Target:	TCEAL8
Binding Specificity:	Center
Reactivity:	Human, Mouse, Rat, Cow, Monkey
Host:	Rabbit
Clonality:	Polyclonal
Conjugate:	This TCEAL8 antibody is un-conjugated
Application:	Western Blotting (WB)

Product Details

Immunogen:	KLH-conjugated synthetic peptide encompassing a sequence within the center region of human TCEAL8.
Specificity:	Recognizes endogenous levels of TCEAL8 protein.
Characteristics:	Rabbit polyclonal antibody to TCEAL8
Purification:	The antibody was purified by immunogen affinity chromatography.

Target Details

Target:	TCEAL8
Alternative Name:	TCEAL8 (TCEAL8 Products)
Background:	Transcription elongation factor A protein-like 8, TCEA-like protein 8, Transcription elongation

Target Details

	factor S-II protein-like 8
Gene ID:	90843, 66684, 367909
UniProt:	Q8IYN2 , Q9CZY2 , Q6I7R5

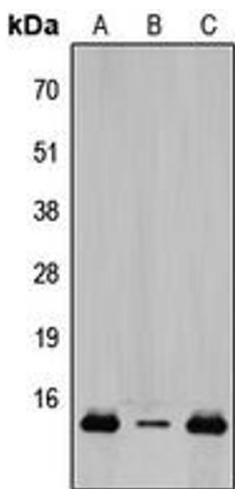
Application Details

Application Notes:	WB (1:500 - 1:1000)
Restrictions:	For Research Use only

Handling

Format:	Liquid
Buffer:	Liquid in 0.42 % Potassium phosphate, 0.87 % Sodium chloride, pH 7.3, 30 % glycerol, and 0.01 % sodium azide.
Preservative:	Sodium azide
Precaution of Use:	This product contains Sodium azide: a POISONOUS AND HAZARDOUS SUBSTANCE which should be handled by trained staff only.
Storage:	-20 °C
Storage Comment:	Shipped at 4°C. Upon delivery aliquot and store at -20°C for one year. Avoid freeze/thaw cycles.
Expiry Date:	12 months

Images



Western Blotting

Image 1. Western blot analysis of TCEAL8 expression in HeLa (A), Raw264.7 (B), PC12 (C) whole cell lysates.