



[Go to Product page](#)

Datasheet for ABIN7301368

## anti-TCOF1 antibody (N-Term)

### 3 Images

#### Overview

Quantity:	100 µL
Target:	TCOF1
Binding Specificity:	N-Term
Reactivity:	Human
Host:	Rabbit
Clonality:	Polyclonal
Conjugate:	This TCOF1 antibody is un-conjugated
Application:	Western Blotting (WB), Immunohistochemistry (IHC), Immunofluorescence (IF), Chromatin Immunoprecipitation (ChIP), Immunochromatography (IC)

#### Product Details

Immunogen:	KLH-conjugated synthetic peptide encompassing a sequence within the N-term region of human TCOF1.
Specificity:	Recognizes endogenous levels of TCOF1 protein.
Characteristics:	Rabbit polyclonal antibody to TCOF1
Purification:	The antibody was purified by immunogen affinity chromatography.

#### Target Details

Target:	TCOF1
Alternative Name:	TCOF1 ( <a href="#">TCOF1 Products</a> )

## Target Details

Background: Treacle protein, Treacher Collins syndrome protein

Gene ID: 6949

UniProt: [Q13428](#)

## Application Details

Application Notes: WB (1:500 - 1:1000), IH (1:100 - 1:200), IF/IC (1:100 - 1:500), ChIP (Use at an assay dependent concentration)

Restrictions: For Research Use only

## Handling

Format: Liquid

Buffer: Liquid in 0.42 % Potassium phosphate, 0.87 % Sodium chloride, pH 7.3, 30 % glycerol, and 0.01 % sodium azide.

Preservative: Sodium azide

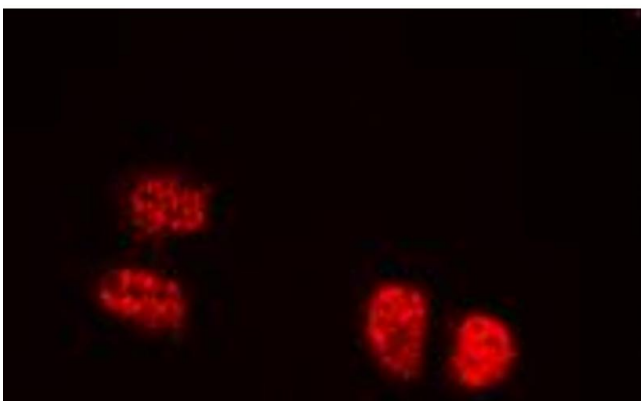
Precaution of Use: This product contains Sodium azide: a POISONOUS AND HAZARDOUS SUBSTANCE which should be handled by trained staff only.

Storage: -20 °C

Storage Comment: Shipped at 4°C. Upon delivery aliquot and store at -20°C for one year. Avoid freeze/thaw cycles.

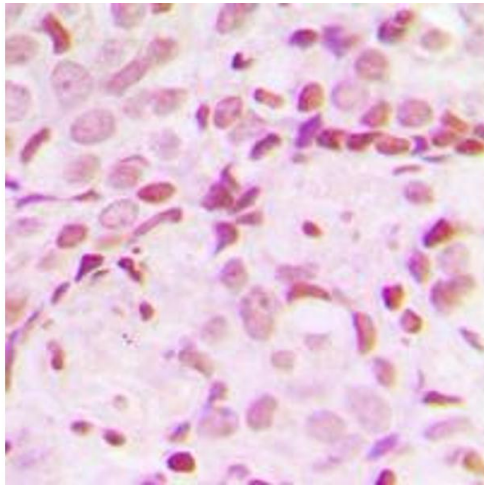
Expiry Date: 12 months

## Images



### Immunofluorescence

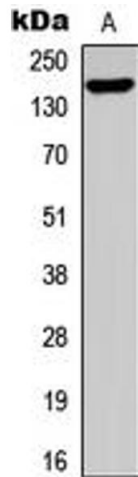
**Image 1.** Immunofluorescent analysis of TCOF1 staining in HEK293T cells. Formalin-fixed cells were permeabilized with 0.1% Triton X-100 in TBS for 5-10 minutes and blocked with 3% BSA-PBS for 30 minutes at room temperature. Cells were probed with the primary antibody in 3% BSA-PBS and incubated overnight at 4 °C in a humidified chamber. Cells were washed with PBST and incubated with a DyLight 594-conjugated secondary antibody (red) in PBS at room



temperature in the dark. DAPI was used to stain the cell nuclei (blue).

### Immunohistochemistry

**Image 2.** Immunohistochemical analysis of TCOF1 staining in human breast cancer formalin fixed paraffin embedded tissue section. The section was pre-treated using heat mediated antigen retrieval with sodium citrate buffer (pH 6.0). The section was then incubated with the antibody at room temperature and detected using an HRP conjugated compact polymer system. DAB was used as the chromogen. The section was then counterstained with haematoxylin and mounted with DPX.



### Western Blotting

**Image 3.** Western blot analysis of TCOF1 expression in HEK293T (A) whole cell lysates.