

Datasheet for ABIN7301418
anti-TTF1 antibody (N-Term)

2 Images

[Go to Product page](#)

Overview

Quantity:	100 µL
Target:	TTF1
Binding Specificity:	N-Term
Reactivity:	Human, Rat, Mouse
Host:	Rabbit
Clonality:	Polyclonal
Conjugate:	This TTF1 antibody is un-conjugated
Application:	Western Blotting (WB), Immunohistochemistry (IHC)

Product Details

Immunogen:	KLH-conjugated synthetic peptide encompassing a sequence within the N-term region of human TTF1.
Specificity:	Recognizes endogenous levels of TTF1 protein.
Characteristics:	Rabbit polyclonal antibody to TTF1
Purification:	The antibody was purified by immunogen affinity chromatography.

Target Details

Target:	TTF1
Alternative Name:	TTF1 (TTF1 Products)
Background:	Transcription termination factor 1, TTF-1, RNA polymerase I termination factor, Transcription

Target Details

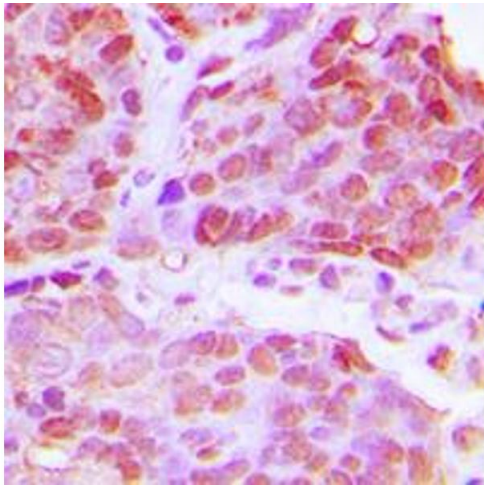
	termination factor I, TTF-I
Gene ID:	7270, 22130
UniProt:	Q15361 , Q62187
Pathways:	Thyroid Hormone Synthesis , Regulation of Systemic Arterial Blood Pressure by Hormones , Feeding Behaviour

Application Details

Application Notes:	WB (1:500 - 1:1000), IH (1:100 - 1:200)
Restrictions:	For Research Use only

Handling

Format:	Liquid
Buffer:	Liquid in 0.42 % Potassium phosphate, 0.87 % Sodium chloride, pH 7.3, 30 % glycerol, and 0.01 % sodium azide.
Preservative:	Sodium azide
Precaution of Use:	This product contains Sodium azide: a POISONOUS AND HAZARDOUS SUBSTANCE which should be handled by trained staff only.
Storage:	-20 °C
Storage Comment:	Shipped at 4°C. Upon delivery aliquot and store at -20°C for one year. Avoid freeze/thaw cycles.
Expiry Date:	12 months



Immunohistochemistry

Image 1. Immunohistochemical analysis of TTF1 staining in human breast cancer formalin fixed paraffin embedded tissue section. The section was pre-treated using heat mediated antigen retrieval with sodium citrate buffer (pH 6.0). The section was then incubated with the antibody at room temperature and detected using an HRP conjugated compact polymer system. DAB was used as the chromogen. The section was then counterstained with haematoxylin and mounted with DPX.

Western Blotting

Image 2. Western blot analysis of TTF1 expression in HEK293T (A), Raw264.7 (B), H9C2 (C) whole cell lysates.

