

Datasheet for ABIN7301422
anti-TUSC2 antibody (Center)[Go to Product page](#)

2 Images

Overview

Quantity:	100 µL
Target:	TUSC2
Binding Specificity:	Center
Reactivity:	Human, Mouse, Rat, Cow, Dog, Pig
Host:	Rabbit
Clonality:	Polyclonal
Conjugate:	This TUSC2 antibody is un-conjugated
Application:	Western Blotting (WB), Immunohistochemistry (IHC)

Product Details

Immunogen:	KLH-conjugated synthetic peptide encompassing a sequence within the center region of human Fusion 1.
Specificity:	Recognizes endogenous levels of Fusion 1 protein.
Characteristics:	Rabbit polyclonal antibody to Fusion 1
Purification:	The antibody was purified by immunogen affinity chromatography.

Target Details

Target:	TUSC2
Alternative Name:	Fusion 1 (TUSC2 Products)
Target Type:	Chemical

Target Details

Background:	C3orf11, FUS1, LGCC, PDAP2, Tumor suppressor candidate 2, Fusion 1 protein, Fus-1 protein, PDGFA-associated protein 2
Gene ID:	11334, 80385
UniProt:	O75896 , Q9WVF8

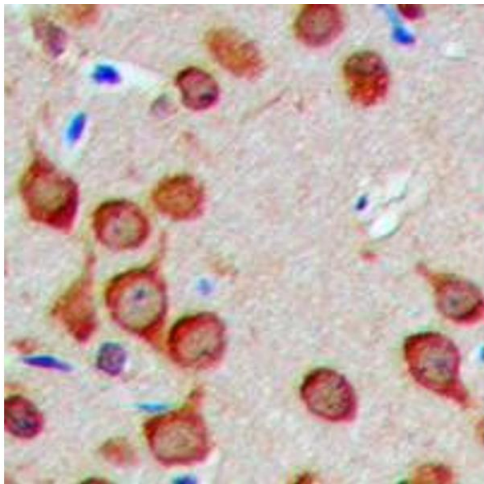
Application Details

Application Notes:	WB (1:500 - 1:1000), IH (1:100 - 1:200)
Restrictions:	For Research Use only

Handling

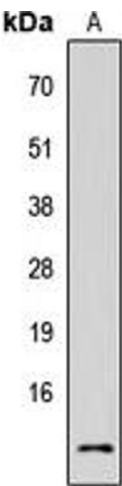
Format:	Liquid
Buffer:	Liquid in 0.42 % Potassium phosphate, 0.87 % Sodium chloride, pH 7.3, 30 % glycerol, and 0.01 % sodium azide.
Preservative:	Sodium azide
Precaution of Use:	This product contains Sodium azide: a POISONOUS AND HAZARDOUS SUBSTANCE which should be handled by trained staff only.
Storage:	-20 °C
Storage Comment:	Shipped at 4°C. Upon delivery aliquot and store at -20°C for one year. Avoid freeze/thaw cycles.
Expiry Date:	12 months

Images



Immunohistochemistry

Image 1. Immunohistochemical analysis of Fusion 1 staining in human brain formalin fixed paraffin embedded tissue section. The section was pre-treated using heat mediated antigen retrieval with sodium citrate buffer (pH 6.0). The section was then incubated with the antibody at room temperature and detected using an HRP conjugated compact polymer system. DAB was used as the chromogen. The section was then counterstained with



haematoxylin and mounted with DPX.

Western Blotting

Image 2. Western blot analysis of Fusion 1 expression in HEK293T (A) whole cell lysates.