

Datasheet for ABIN7301438
anti-WASF3 antibody (Center)[Go to Product page](#)

2 Images

Overview

| | |
|----------------------|---|
| Quantity: | 100 µL |
| Target: | WASF3 |
| Binding Specificity: | Center |
| Reactivity: | Human, Mouse, Monkey |
| Host: | Rabbit |
| Clonality: | Polyclonal |
| Conjugate: | This WASF3 antibody is un-conjugated |
| Application: | Western Blotting (WB), Immunohistochemistry (IHC) |

Product Details

| | |
|------------------|---|
| Immunogen: | KLH-conjugated synthetic peptide encompassing a sequence within the center region of human WASF3. |
| Specificity: | Recognizes endogenous levels of WASF3 protein. |
| Characteristics: | Rabbit polyclonal antibody to WASF3 |
| Purification: | The antibody was purified by immunogen affinity chromatography. |

Target Details

| | |
|-------------------|---|
| Target: | WASF3 |
| Alternative Name: | WASF3 (WASF3 Products) |
| Background: | KIAA0900, SCAR3, WAVE3, Wiskott-Aldrich syndrome protein family member 3, WASP family |

Target Details

| | |
|-----------|--|
| | protein member 3, Protein WAVE-3, Verprolin homology domain-containing protein 3 |
| Gene ID: | 10810, 245880 |
| UniProt: | Q9UPY6 , Q8VHI6 |
| Pathways: | RTK Signaling |

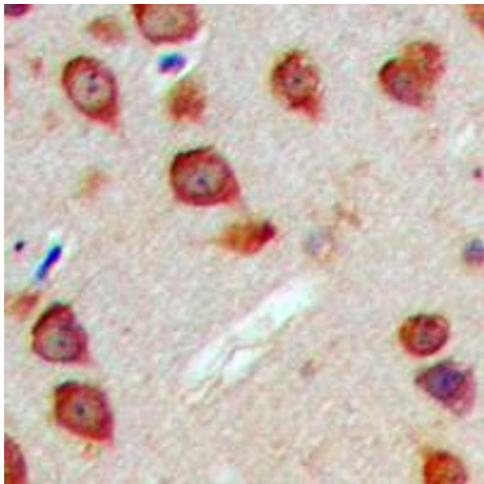
Application Details

| | |
|--------------------|---|
| Application Notes: | WB (1:500 - 1:1000), IH (1:100 - 1:200) |
| Restrictions: | For Research Use only |

Handling

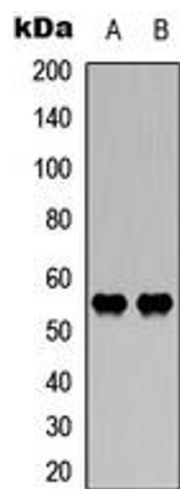
| | |
|--------------------|--|
| Format: | Liquid |
| Buffer: | Liquid in 0.42 % Potassium phosphate, 0.87 % Sodium chloride, pH 7.3, 30 % glycerol, and 0.01 % sodium azide. |
| Preservative: | Sodium azide |
| Precaution of Use: | This product contains Sodium azide: a POISONOUS AND HAZARDOUS SUBSTANCE which should be handled by trained staff only. |
| Storage: | -20 °C |
| Storage Comment: | Shipped at 4°C. Upon delivery aliquot and store at -20°C for one year. Avoid freeze/thaw cycles. |
| Expiry Date: | 12 months |

Images



Immunohistochemistry

Image 1. Immunohistochemical analysis of WASF3 staining in human brain formalin fixed paraffin embedded tissue section. The section was pre-treated using heat mediated antigen retrieval with sodium citrate buffer (pH 6.0). The section was then incubated with the antibody at room temperature and detected using an HRP conjugated compact polymer system. DAB was used as the chromogen. The section was then counterstained with haematoxylin and



mounted with DPX.

Western Blotting

Image 2. Western blot analysis of WASF3 expression in HEK293T (A), mouse brain (B) whole cell lysates.