

Datasheet for ABIN7301444
anti-XCL1 antibody (Center)



[Go to Product page](#)

1 Image

Overview

Quantity:	100 µL
Target:	XCL1
Binding Specificity:	Center
Reactivity:	Human, Mouse, Rat
Host:	Rabbit
Clonality:	Polyclonal
Conjugate:	This XCL1 antibody is un-conjugated
Application:	Western Blotting (WB)

Product Details

Immunogen:	KLH-conjugated synthetic peptide encompassing a sequence within the center region of human XCL1.
Specificity:	Recognizes endogenous levels of XCL1 protein.
Characteristics:	Rabbit polyclonal antibody to XCL1
Purification:	The antibody was purified by immunogen affinity chromatography.

Target Details

Target:	XCL1
Alternative Name:	XCL1 (XCL1 Products)
Background:	XCL1, LTN, SCYC1, Lymphotactin, ATAC, C motif chemokine 1, Cytokine SCM-1, Lymphotaxin,

Target Details

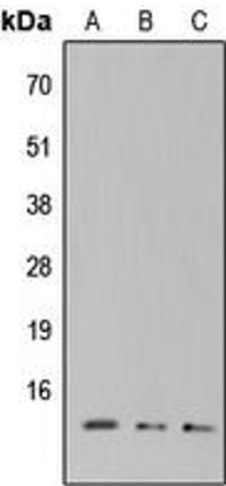
	SCM-1-alpha, Small-inducible cytokine C1, XC chemokine ligand 1, XCL2, SCYC2, Cytokine SCM-1 beta, C motif chemokine 2, XC chemokine ligand 2
Gene ID:	6375, 6846
UniProt:	P47992 , Q9UBD3
Pathways:	Regulation of Leukocyte Mediated Immunity , Positive Regulation of Immune Effector Process , Production of Molecular Mediator of Immune Response , Activated T Cell Proliferation

Application Details

Application Notes:	WB (1:500 - 1:1000)
Restrictions:	For Research Use only

Handling

Format:	Liquid
Buffer:	Liquid in 0.42 % Potassium phosphate, 0.87 % Sodium chloride, pH 7.3, 30 % glycerol, and 0.01 % sodium azide.
Preservative:	Sodium azide
Precaution of Use:	This product contains Sodium azide: a POISONOUS AND HAZARDOUS SUBSTANCE which should be handled by trained staff only.
Storage:	-20 °C
Storage Comment:	Shipped at 4°C. Upon delivery aliquot and store at -20°C for one year. Avoid freeze/thaw cycles.
Expiry Date:	12 months



Western Blotting

Image 1. Western blot analysis of XCL1 expression in HEK293T (A), Raw264.7 (B), H9C2 (C) whole cell lysates.