

Datasheet for ABIN7301448  
**anti-ZCCHC17 antibody (Center)**

## 2 Images

[Go to Product page](#)

## Overview

Quantity:	100 µL
Target:	ZCCHC17
Binding Specificity:	Center
Reactivity:	Human, Mouse, Rat, Monkey
Host:	Rabbit
Clonality:	Polyclonal
Conjugate:	This ZCCHC17 antibody is un-conjugated
Application:	Western Blotting (WB), Immunohistochemistry (IHC)

## Product Details

Immunogen:	KLH-conjugated synthetic peptide encompassing a sequence within the center region of human PS1D.
Specificity:	Recognizes endogenous levels of PS1D protein.
Characteristics:	Rabbit polyclonal antibody to PS1D
Purification:	The antibody was purified by immunogen affinity chromatography.

## Target Details

Target:	ZCCHC17
Alternative Name:	PS1D ( <a href="#">ZCCHC17 Products</a> )
Background:	PS1D, Nucleolar protein of 40 kDa, pN040, Pnn-interacting nucleolar protein, Putative S1 RNA-

## Target Details

	binding domain protein, PS1D protein, Zinc finger CCHC domain-containing protein 17
Gene ID:	51538, 619605
UniProt:	<a href="#">Q9NP64</a> , <a href="#">Q9ESX4</a>

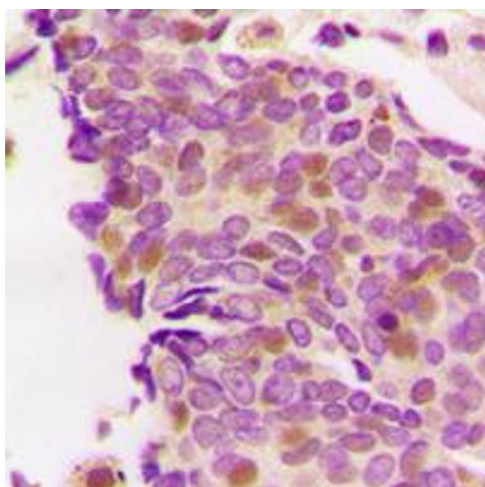
## Application Details

Application Notes:	WB (1:500 - 1:1000), IH (1:100 - 1:200)
Restrictions:	For Research Use only

## Handling

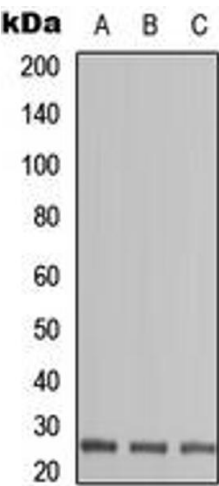
Format:	Liquid
Buffer:	Liquid in 0.42 % Potassium phosphate, 0.87 % Sodium chloride, pH 7.3, 30 % glycerol, and 0.01 % sodium azide.
Preservative:	Sodium azide
Precaution of Use:	This product contains Sodium azide: a POISONOUS AND HAZARDOUS SUBSTANCE which should be handled by trained staff only.
Storage:	-20 °C
Storage Comment:	Shipped at 4°C. Upon delivery aliquot and store at -20°C for one year. Avoid freeze/thaw cycles.
Expiry Date:	12 months

## Images



### Immunohistochemistry

**Image 1.** Immunohistochemical analysis of PS1D staining in human breast cancer formalin fixed paraffin embedded tissue section. The section was pre-treated using heat mediated antigen retrieval with sodium citrate buffer (pH 6.0). The section was then incubated with the antibody at room temperature and detected using an HRP conjugated compact polymer system. DAB was used as the chromogen. The section was then counterstained with haematoxylin and mounted with DPX.



Western Blotting

**Image 2.** Western blot analysis of PS1D expression in HEK293T (A), Raw264.7 (B), H9C2 (C) whole cell lysates.