

Datasheet for ABIN7301482  
**anti-PRAS40 antibody (C-Term)**[Go to Product page](#)

## 2 Images

## Overview

Quantity:	100 µL
Target:	PRAS40 (AKT1S1)
Binding Specificity:	C-Term
Reactivity:	Human, Mouse, Rat, Cow
Host:	Rabbit
Clonality:	Polyclonal
Conjugate:	This PRAS40 antibody is un-conjugated
Application:	Western Blotting (WB), Immunohistochemistry (IHC)

## Product Details

Immunogen:	KLH-conjugated synthetic peptide encompassing a sequence within the C-term region of human PRAS40.
Specificity:	Recognizes endogenous levels of PRAS40 protein.
Characteristics:	Rabbit polyclonal antibody to PRAS40
Purification:	The antibody was purified by immunogen affinity chromatography.

## Target Details

Target:	PRAS40 (AKT1S1)
Alternative Name:	PRAS40 ( <a href="#">AKT1S1 Products</a> )
Background:	PRAS40, Proline-rich AKT1 substrate 1, 40 kDa proline-rich AKT substrate

## Target Details

Gene ID:	84335, 67605
UniProt:	<a href="#">Q96B36</a> , <a href="#">Q9D1F4</a>
Pathways:	<a href="#">Fc-epsilon Receptor Signaling Pathway</a> , <a href="#">EGFR Signaling Pathway</a> , <a href="#">Neurotrophin Signaling Pathway</a> , <a href="#">Regulation of Cell Size</a> , <a href="#">Autophagy</a> , <a href="#">BCR Signaling</a> , <a href="#">Warburg Effect</a>

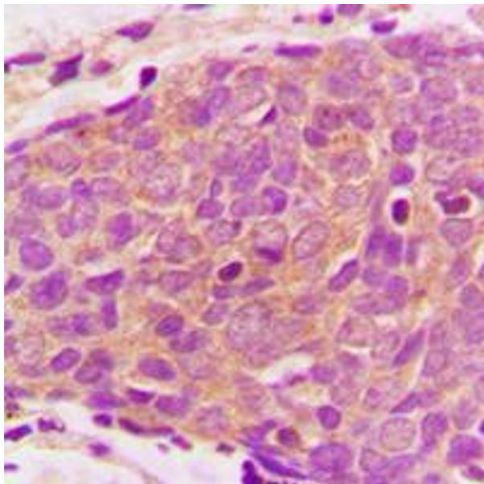
## Application Details

Application Notes:	WB (1:500 - 1:1000), IH (1:100 - 1:200)
Restrictions:	For Research Use only

## Handling

Format:	Liquid
Buffer:	Liquid in 0.42 % Potassium phosphate, 0.87 % Sodium chloride, pH 7.3, 30 % glycerol, and 0.01 % sodium azide.
Preservative:	Sodium azide
Precaution of Use:	This product contains Sodium azide: a POISONOUS AND HAZARDOUS SUBSTANCE which should be handled by trained staff only.
Storage:	-20 °C
Storage Comment:	Shipped at 4°C. Upon delivery aliquot and store at -20°C for one year. Avoid freeze/thaw cycles.
Expiry Date:	12 months

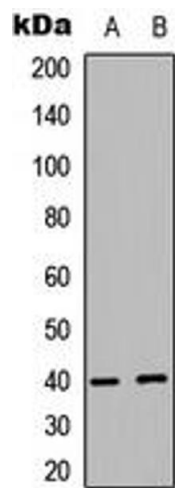
## Images



### Immunohistochemistry

**Image 1.** Immunohistochemical analysis of PRAS40 staining in human breast cancer formalin fixed paraffin embedded tissue section. The section was pre-treated using heat mediated antigen retrieval with sodium citrate buffer (pH 6.0). The section was then incubated with the antibody at room temperature and detected using an HRP conjugated compact polymer system. DAB was used as the chromogen. The section was then counterstained with

haematoxylin and mounted with DPX.



Western Blotting

**Image 2.** Western blot analysis of PRAS40 expression in MCF7 (A), human Testis (B) whole cell lysates.