

Datasheet for ABIN7301516  
**anti-BCR antibody (N-Term)**



[Go to Product page](#)

2 Images

## Overview

Quantity:	100 µL
Target:	BCR
Binding Specificity:	N-Term
Reactivity:	Human, Mouse, Rat
Host:	Rabbit
Clonality:	Polyclonal
Conjugate:	This BCR antibody is un-conjugated
Application:	Western Blotting (WB), ELISA, Immunohistochemistry (IHC)

## Product Details

Immunogen:	KLH-conjugated synthetic peptide encompassing a sequence within the N-term region of human BCR.
Specificity:	Recognizes endogenous levels of BCR protein.
Characteristics:	Rabbit polyclonal antibody to BCR
Purification:	The antibody was purified by immunogen affinity chromatography.

## Target Details

Target:	BCR
Alternative Name:	BCR ( <a href="#">BCR Products</a> )
Background:	BCR1, D22S11, Breakpoint cluster region protein, Renal carcinoma antigen NY-REN-26

## Target Details

Gene ID:	613, 110279
UniProt:	<a href="#">P11274</a> , <a href="#">Q6PAJ1</a>
Pathways:	<a href="#">Regulation of Leukocyte Mediated Immunity</a> , <a href="#">Platelet-derived growth Factor Receptor Signaling</a>

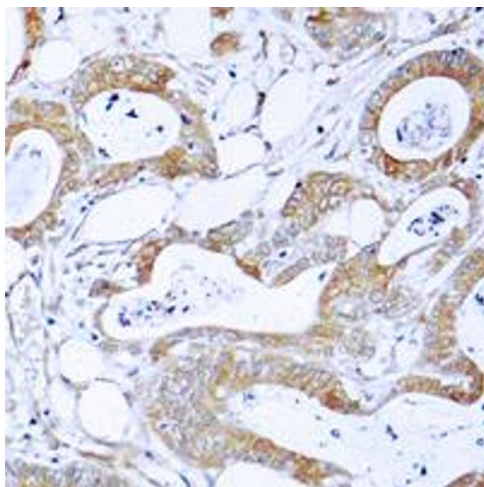
## Application Details

Application Notes:	SE (Use a concentration of 0.5 µg/mL), WB (1:500 - 1:1000), IH (1:100 - 1:200)
Restrictions:	For Research Use only

## Handling

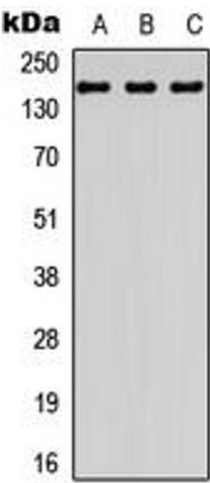
Format:	Liquid
Buffer:	Liquid in 0.42 % Potassium phosphate, 0.87 % Sodium chloride, pH 7.3, 30 % glycerol, and 0.01 % sodium azide.
Preservative:	Sodium azide
Precaution of Use:	This product contains Sodium azide: a POISONOUS AND HAZARDOUS SUBSTANCE which should be handled by trained staff only.
Storage:	-20 °C
Storage Comment:	Shipped at 4°C. Upon delivery aliquot and store at -20°C for one year. Avoid freeze/thaw cycles.
Expiry Date:	12 months

## Images



### Immunohistochemistry

**Image 1.** Immunohistochemical analysis of BCR staining in human colon cancer formalin fixed paraffin embedded tissue section. The section was pre-treated using heat mediated antigen retrieval with sodium citrate buffer (pH 6.0). The section was then incubated with the antibody at room temperature and detected using an HRP conjugated compact polymer system. DAB was used as the chromogen. The section was then counterstained with haematoxylin and mounted with DPX.



Western Blotting

**Image 2.** Western blot analysis of BCR expression in HepG2 (A), mouse brain (B), rat brain (C) whole cell lysates.