



[Go to Product page](#)

Datasheet for ABIN7301530

anti-CaMK2 beta/gamma antibody (pSer287)

2 Images

Overview

| | |
|----------------------|---|
| Quantity: | 100 µL |
| Target: | CaMK2 beta/gamma |
| Binding Specificity: | pSer287 |
| Reactivity: | Human, Mouse, Rat, Cow, Monkey, Pig, Rabbit |
| Host: | Rabbit |
| Clonality: | Polyclonal |
| Conjugate: | This CaMK2 beta/gamma antibody is un-conjugated |
| Application: | Western Blotting (WB), Immunohistochemistry (IHC) |

Product Details

| | |
|------------------|--|
| Immunogen: | KLH-conjugated synthetic peptide encompassing a sequence within the center region of human CaMK2 beta/gamma (pT287). |
| Specificity: | Recognizes endogenous levels of CaMK2 beta/gamma (pT287) protein. |
| Characteristics: | Rabbit polyclonal antibody to CaMK2 beta/gamma (pT287) |
| Purification: | The antibody was purified by immunogen affinity chromatography. |

Target Details

| | |
|-------------|---|
| Target: | CaMK2 beta/gamma |
| Abstract: | CaMK2 beta/gamma Products |
| Background: | CAMK2B, CAM2, CAMK2, CAMKB, Calcium/calmodulin-dependent protein kinase type II subunit |

Target Details

beta, CaM kinase II subunit beta, CaMK-II subunit beta, CAMK2G, CAMK, CAMK-II, CAMKG, Calcium/calmodulin-dependent protein kinase type II subunit gamma, CaM kinase II subunit gamma, CaMK-II subunit gamma

Gene ID: 816, 818, 12323

UniProt: [Q13554](#), [Q13555](#), [P28652](#), [Q923T9](#), [P08413](#), [P11730](#)

Application Details

Application Notes: WB (1:500 - 1:1000), IH (1:100 - 1:200)

Restrictions: For Research Use only

Handling

Format: Liquid

Buffer: Liquid in 0.42 % Potassium phosphate, 0.87 % Sodium chloride, pH 7.3, 30 % glycerol, and 0.01 % sodium azide.

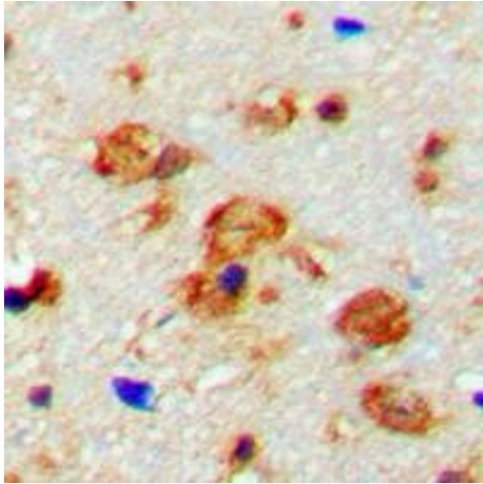
Preservative: Sodium azide

Precaution of Use: This product contains Sodium azide: a POISONOUS AND HAZARDOUS SUBSTANCE which should be handled by trained staff only.

Storage: -20 °C

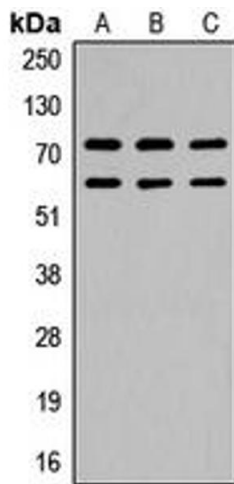
Storage Comment: Shipped at 4°C. Upon delivery aliquot and store at -20°C for one year. Avoid freeze/thaw cycles.

Expiry Date: 12 months



Immunohistochemistry

Image 1. Immunohistochemical analysis of CaMK2 beta/gamma (pT287) staining in human brain formalin fixed paraffin embedded tissue section. The section was pre-treated using heat mediated antigen retrieval with sodium citrate buffer (pH 6.0). The section was then incubated with the antibody at room temperature and detected using an HRP conjugad compact polymer system. DAB was used as the chromogen. The section was then counterstained with haematoxylin and mounted with DPX.



Western Blotting

Image 2. Western blot analysis of CaMK2 beta/gamma (pT287) expression in Raji (A), mouse brain (B), rat brain (C) whole cell lysates.