

Datasheet for ABIN7301532

anti-Caspase 6 antibody (C-Term)

3 Images



[Go to Product page](#)

Overview

Quantity:	100 µL
Target:	Caspase 6 (CASP6)
Binding Specificity:	C-Term
Reactivity:	Human, Mouse, Rat, Cow, Monkey
Host:	Rabbit
Clonality:	Polyclonal
Conjugate:	This Caspase 6 antibody is un-conjugated
Application:	Western Blotting (WB), Immunohistochemistry (IHC), Immunofluorescence (IF), Immunochromatography (IC)

Product Details

Immunogen:	KLH-conjugated synthetic peptide encompassing a sequence within the C-term region of human Caspase 6.
Specificity:	Recognizes endogenous levels of Caspase 6 protein.
Characteristics:	Rabbit polyclonal antibody to Caspase 6
Purification:	The antibody was purified by immunogen affinity chromatography.

Target Details

Target:	Caspase 6 (CASP6)
Alternative Name:	Caspase 6 (CASP6 Products)

Target Details

Background: MCH2, Caspase-6, CASP-6, Apoptotic protease Mch-2

Gene ID: 839, 12368

UniProt: [P55212](#), [O08738](#), [O35397](#)

Pathways: [Apoptosis, Caspase Cascade in Apoptosis](#)

Application Details

Application Notes: WB (1:500 - 1:1000), IH (1:100 - 1:200), IF/IC (1:100 - 1:500)

Restrictions: For Research Use only

Handling

Format: Liquid

Buffer: Liquid in 0.42 % Potassium phosphate, 0.87 % Sodium chloride, pH 7.3, 30 % glycerol, and 0.01 % sodium azide.

Preservative: Sodium azide

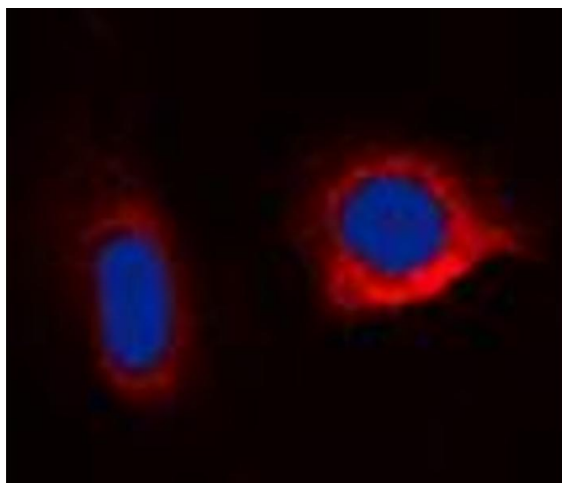
Precaution of Use: This product contains Sodium azide: a POISONOUS AND HAZARDOUS SUBSTANCE which should be handled by trained staff only.

Storage: -20 °C

Storage Comment: Shipped at 4°C. Upon delivery aliquot and store at -20°C for one year. Avoid freeze/thaw cycles.

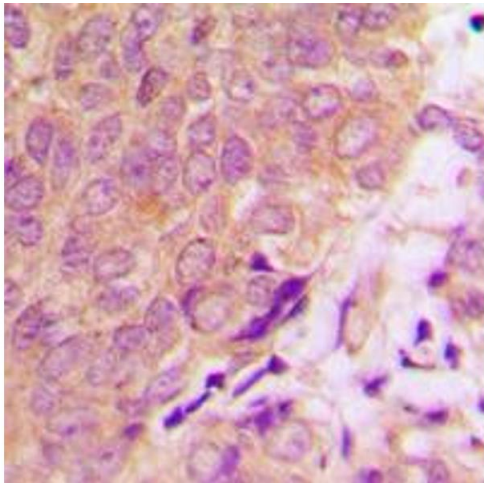
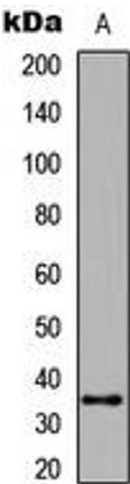
Expiry Date: 12 months

Images



Immunofluorescence

Image 1. Immunofluorescent analysis of Caspase 6 staining in HepG2 cells. Formalin-fixed cells were permeabilized with 0.1% Triton X-100 in TBS for 5-10 minutes and blocked with 3% BSA-PBS for 30 minutes at room temperature. Cells were probed with the primary antibody in 3% BSA-PBS and incubated overnight at 4 °C in a humidified chamber. Cells were washed with PBST and incubated with a DyLight 594-conjugated secondary antibody (red) in PBS at room



temperature in the dark. DAPI was used to stain the cell nuclei (blue).

Western Blotting

Image 2. Western blot analysis of Caspase 6 expression in HepG2 (A), Raw264.7 (B) whole cell lysates.

Immunohistochemistry

Image 3. Immunohistochemical analysis of Caspase 6 staining in human prostate cancer formalin fixed paraffin embedded tissue section. The section was pre-treated using heat mediated antigen retrieval with sodium citrate buffer (pH 6.0). The section was then incubated with the antibody at room temperature and detected using an HRP conjugated compact polymer system. DAB was used as the chromogen. The section was then counterstained with haematoxylin and mounted with DPX.